

Are Atlanta's Neighborhoods Ready for Children?

Neighborhood Nexus School Readiness and Success Data Forum

Atlanta, GA

May 7, 2009

Michael J. Rich
Emory University

Director, Office of University-Community Partnerships
Associate Professor, Dept. of Political Science

mrich@emory.edu (404) 712-9691

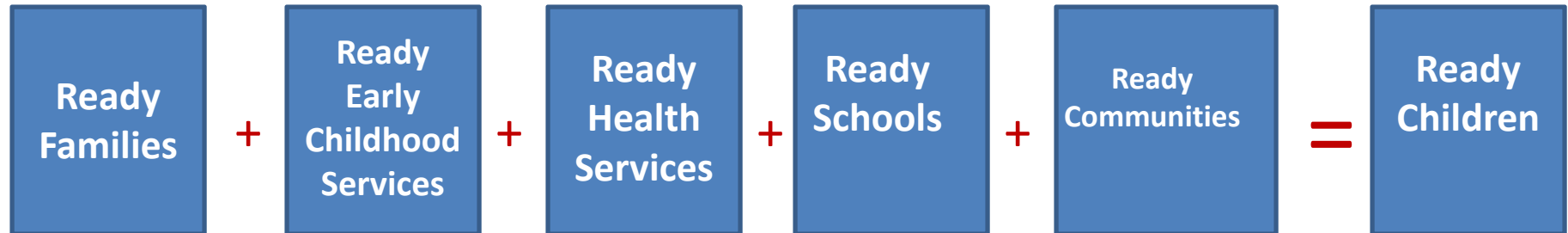


EMORY
UNIVERSITY

Office of
University-Community
Partnerships

The Ready Child Equation

National School Readiness Indicators Initiative



- Mother's education level
- Births to teens
- Child abuse and neglect
- Foster care

- Early learning centers
- Accredited child care centers
- Access to child care subsidies

- Health insurance
- Low birthweight infants
- Access to prenatal care
- Immunizations

- Class size—teacher/child ratios
- Reading and language proficiency
- Quality schools

- Poverty rates
- Economic conditions
- Environmental conditions
- Public safety

- Physical well-being
- Social and emotional development
- Language development
- Approaches to learning
- Cognition and general knowledge

Local Research Strategy

- Start with Census 2000 data
- Gather administrative data to extend data coverage and increase currency
- Build longitudinal data base to track trends
- Add assets to examine fit between demand for and supply of services
- Challenges:
 - Executing MOAs and acquiring data sets
 - Multiple jurisdictions

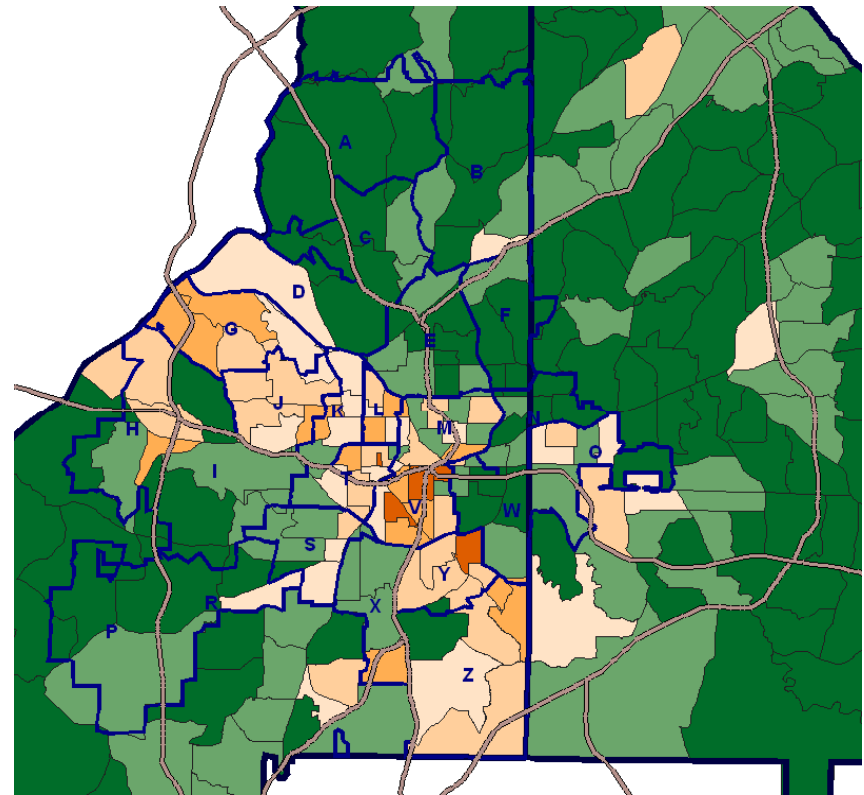
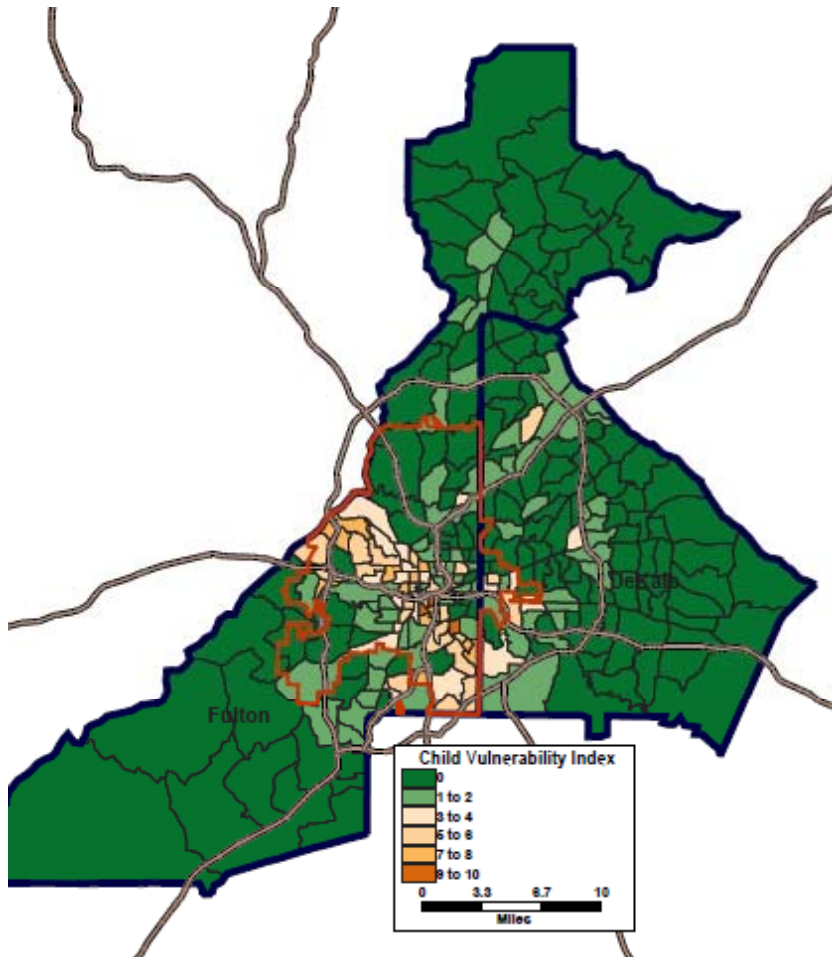
Child Vulnerability Index

Vulnerability indicators:

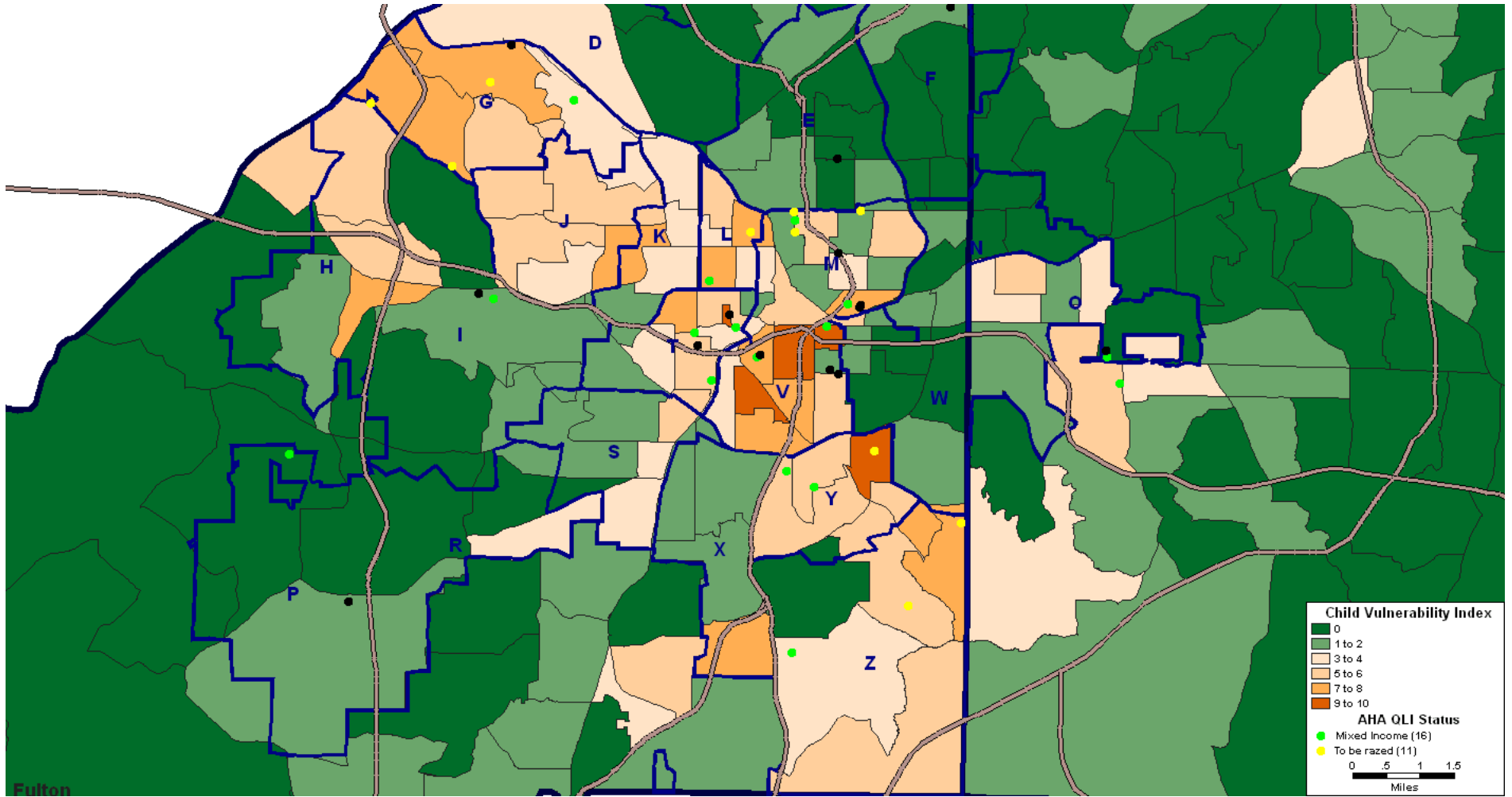
1. Percent single-parent families
2. Percent of families with children below poverty
3. Percent of adults (age 25+) with no high school degree
4. Percent of adults (age 25+) college degree or higher
5. Percent of youth ages 16-19 not in school and not in the labor force
6. Percent of households on public assistance
7. Percent of households with wage income
8. Percent of households with interest, rent, or dividend income
9. Percent of adults with limited English proficiency
10. Percent owner-occupied housing

Geography: Census tracts in Fulton and DeKalb counties

Vulnerable Neighborhoods



Vulnerable Neighborhoods with AHA Communities



Population Characteristics

Fulton and DeKalb Counties

Item	All tracts	No. of Vulnerability Factors			
		None	1-2	3-5	6-10
Population					
2000 (1.5 million)	100.0	61.7	25.4	7.3	5.6
2008 (1.8 million)	100.0	63.9	24.0	6.9	5.2
% change, 2000-2008	18.4	22.7	12.0	12.0	9.6
Children, under age 18					
2000 (362,451)	100.0	62.1	22.2	7.5	8.3
2008 (413,910)	100.0	64.2	21.1	7.2	7.6
% change, 2000-2008	14.2	18.0	8.6	9.6	4.5

Sources: U.S. Bureau of the Census, Census 2000; Atlanta Regional Commission, Population estimates, 2008

Population Characteristics by Area

Item	All tracts	No. of Vulnerability Factors			
		None	1-2	3-5	6-10
Children under age 18					
Fulton and DeKalb Counties	100.0	64.2	21.1	7.2	7.6
City of Atlanta	100.0	27.3	22.7	21.9	28.2
Suburban Fulton County	100.0	81.9	16.4	0.1	1.5
Suburban DeKalb County	100.0	71.7	24.1	4.2	0.0
Children under age 5					
Fulton and DeKalb Counties	100.0	62.0	22.6	7.4	8.0
City of Atlanta	100.0	27.0	22.4	21.7	28.9
Suburban Fulton County	100.0	79.2	18.9	0.2	1.8
Suburban DeKalb County	100.0	69.8	25.8	4.4	0.0

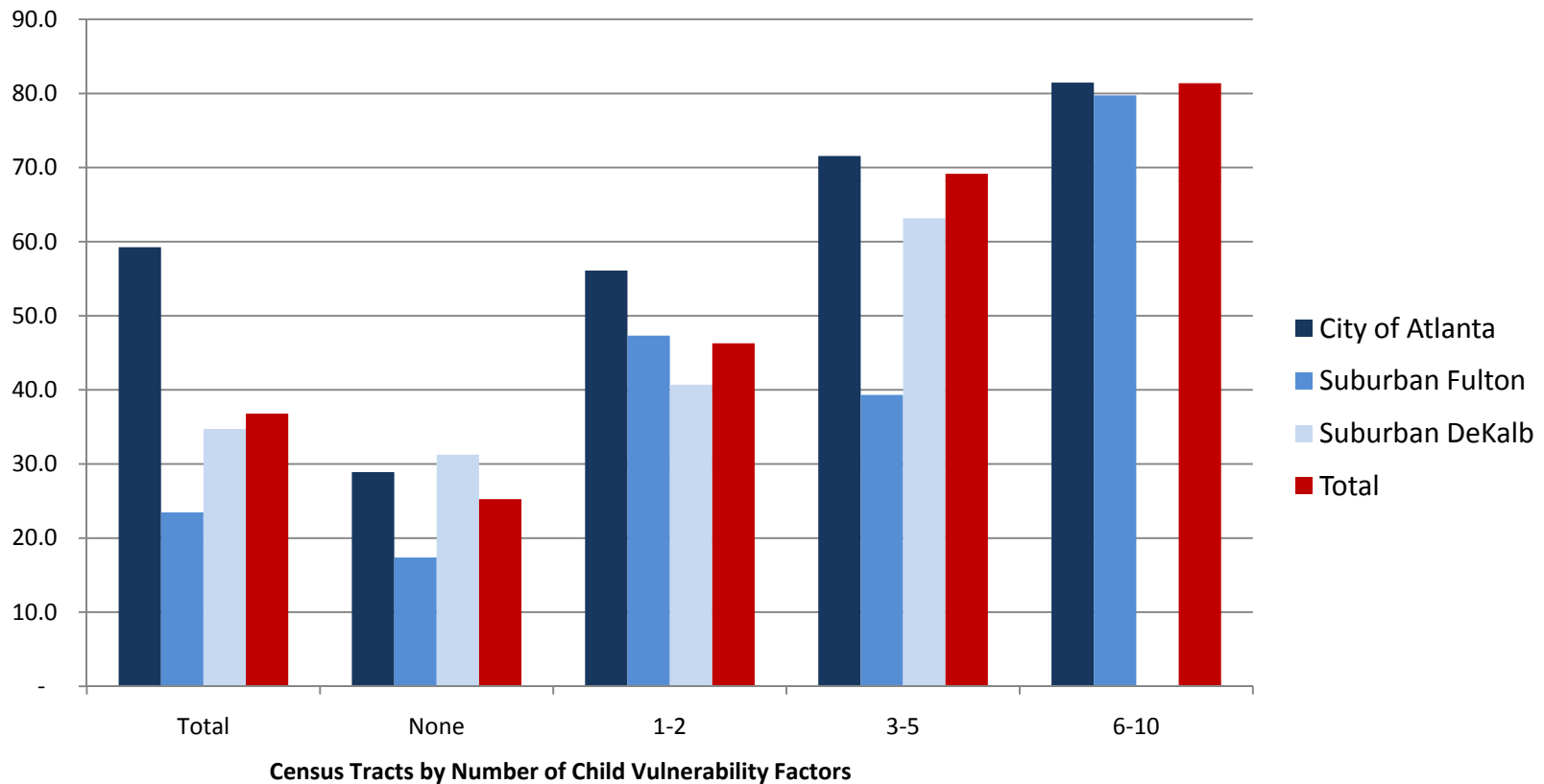
Sources: U.S. Bureau of the Census, Census 2000; Atlanta Regional Commission, Population estimates, 2008

Ready Families

- Household/family type
- Employment status of parents
- Births by maternal status
 - Births to teens
 - Births to mothers with less than 12 years of education

Family context varies dramatically by neighborhood type

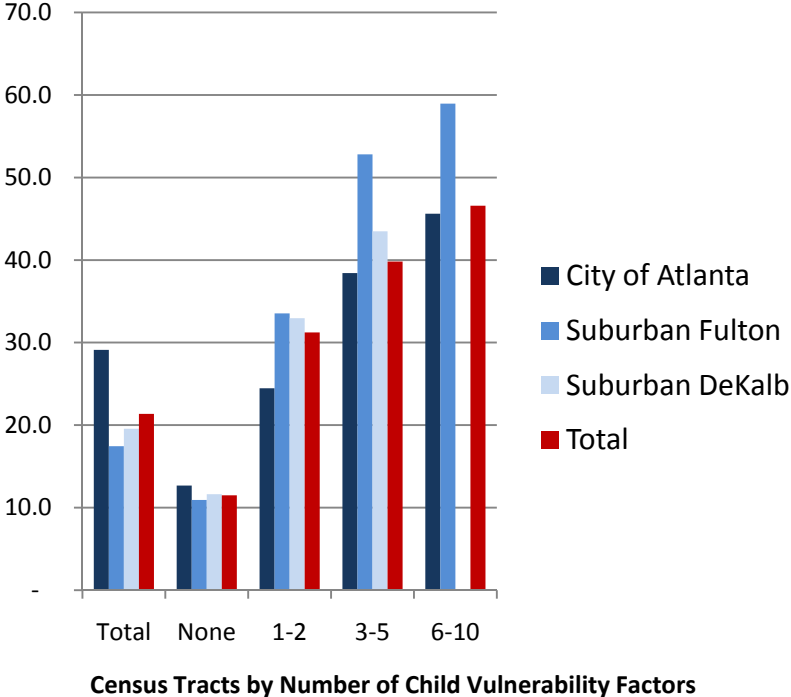
Percent of children in single-parent families, 2000



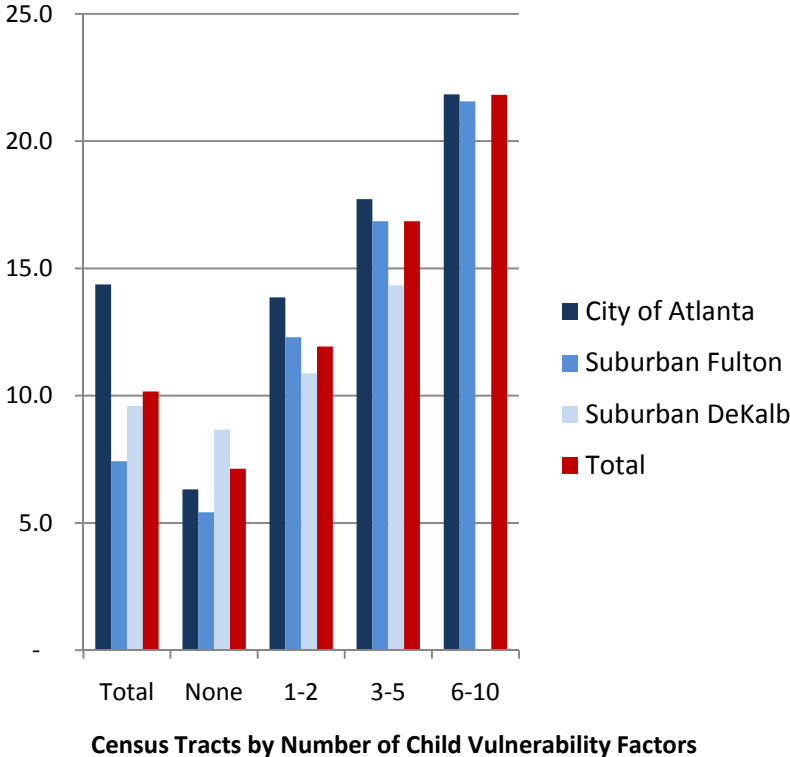
Source: U.S. Bureau of the Census, Census 2000

At-risk children are more likely to be born in vulnerable neighborhoods

Percent of births to mothers with less than 12 years of education, 2000-2006



Percent of Births to Teens, 2000-2006



Sources: U.S. Bureau of the Census, Census 2000; Georgia Department of Human Resources, Division of Public Health

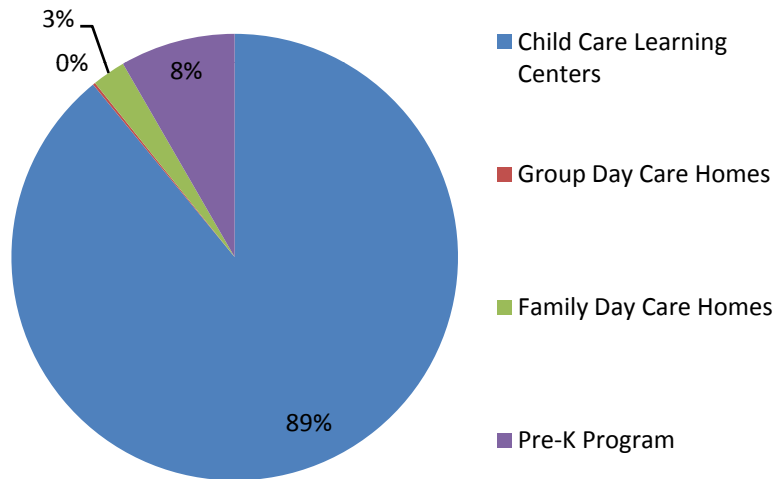
Ready Early Childhood Services

- Child care learning centers
- Group day care homes
- Family day care homes
- Head Start
- Pre-K Program

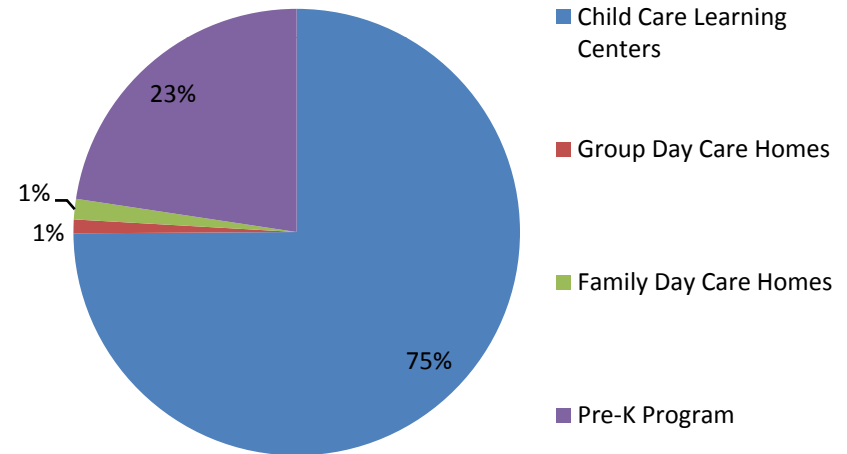
Data Source: Georgia Department of Early Care and Learning

Distribution of Early Learning Slots by Type of Neighborhood

No Vulnerability Factors



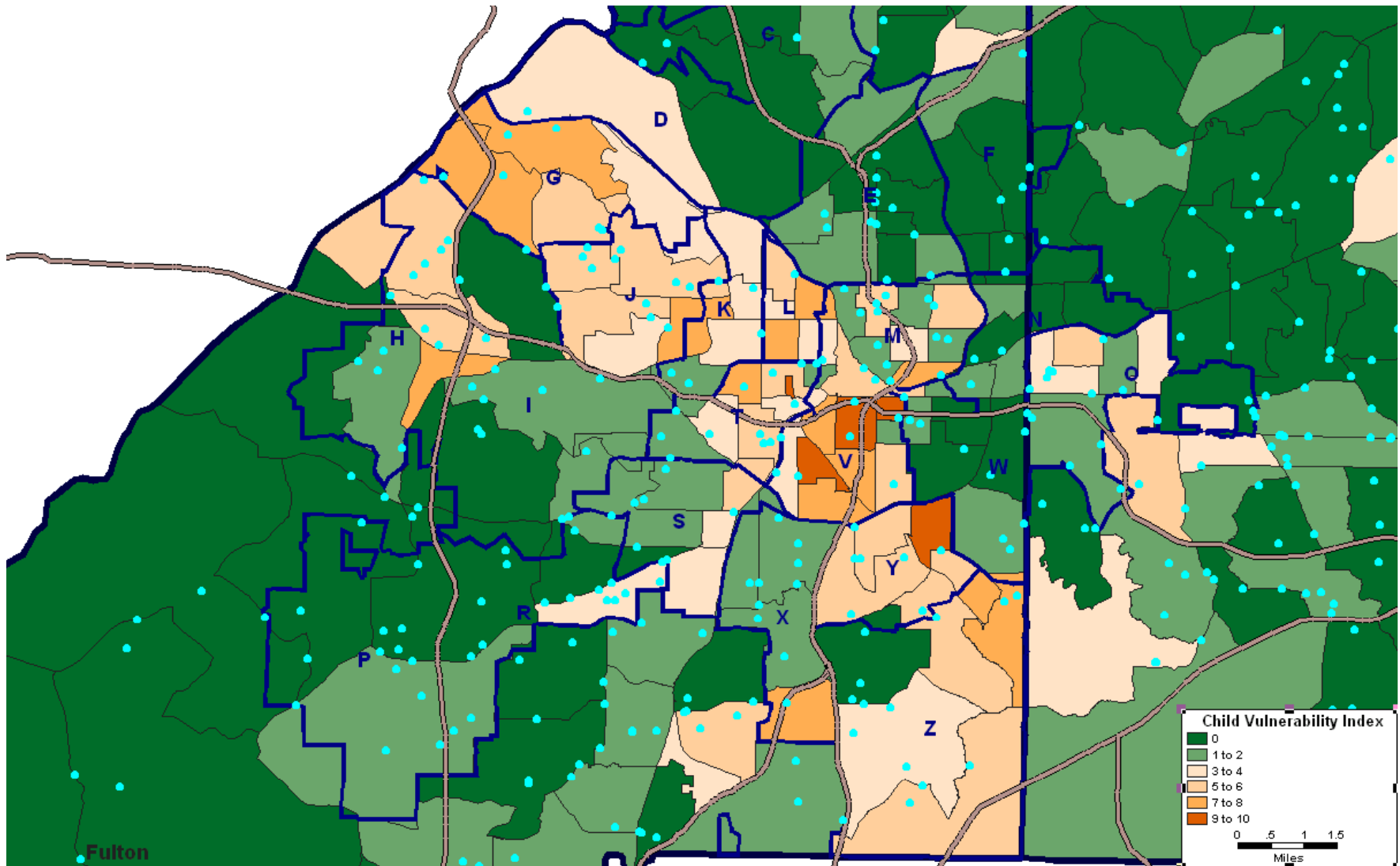
6-10 Vulnerability Factors



City of Atlanta

Sources: U.S. Bureau of the Census, Census 2000; Georgia Department of Early Care and Learning

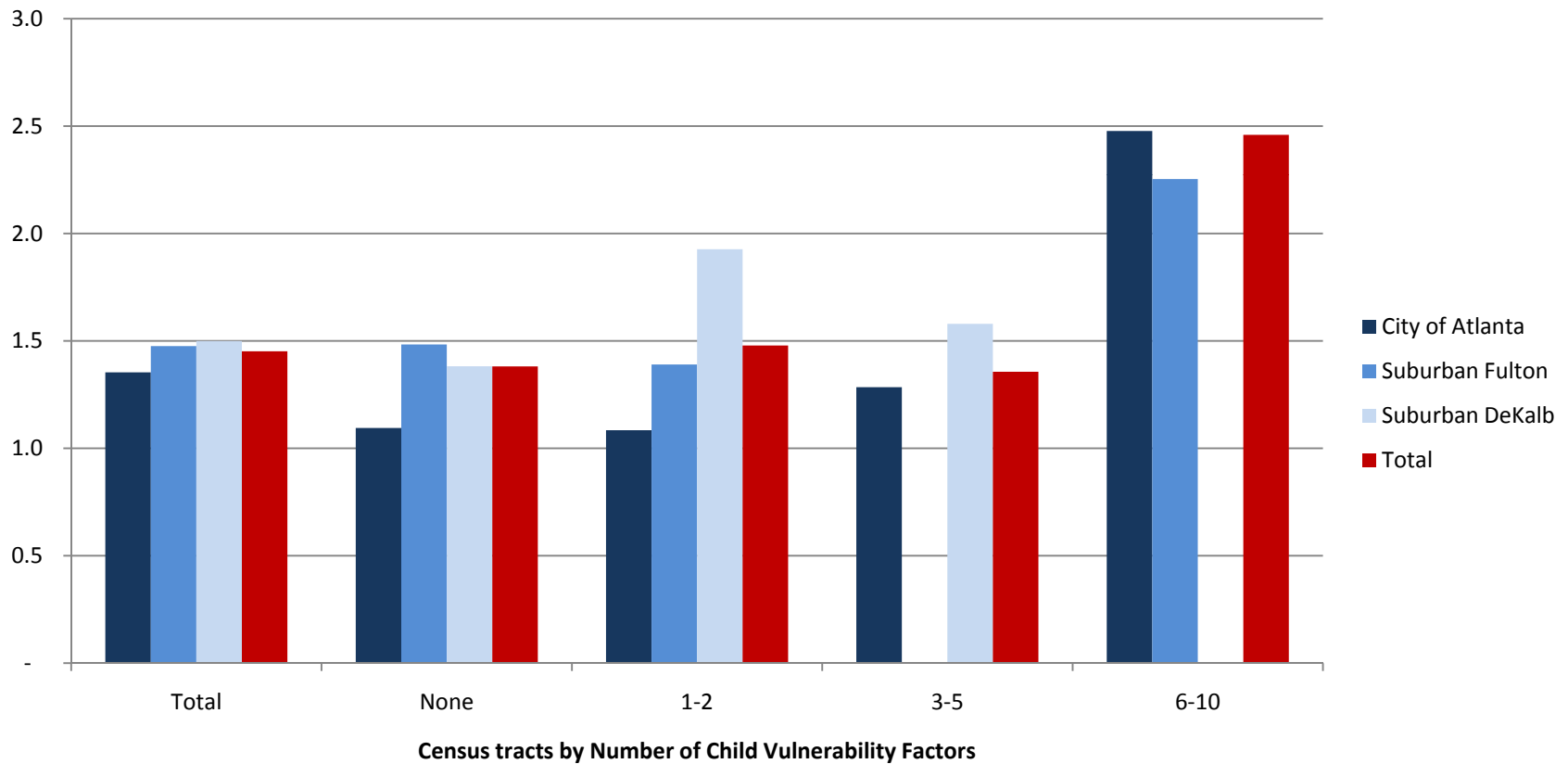
Child Care Learning Centers and Group Day Care Homes



Sources: U.S. Bureau of the Census, Census 2000; Georgia Department of Early Care and Learning

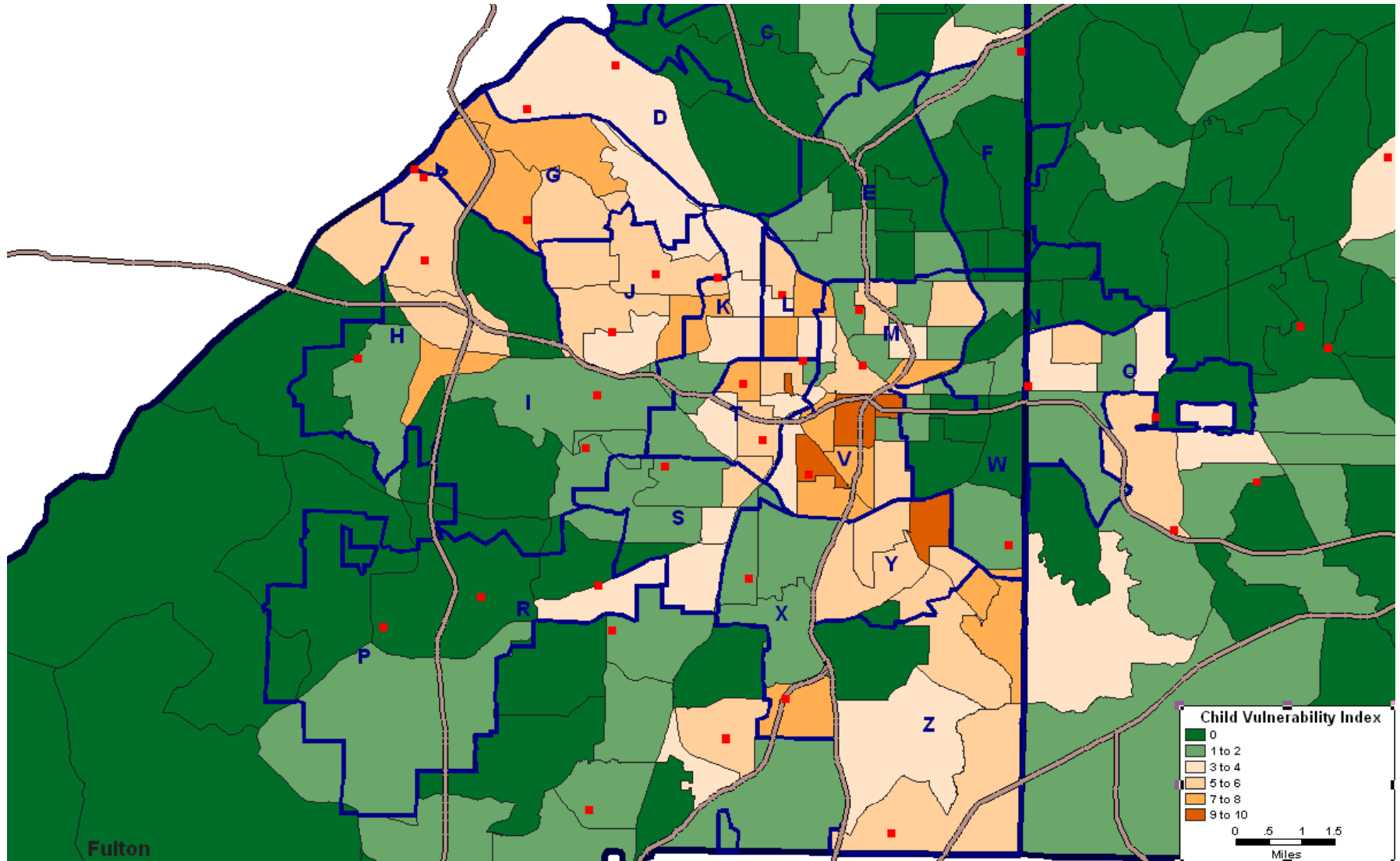
Neighborhoods with Highest Child-Raising Vulnerability are Underserved

Children Under 5 per Child Care and Pre-K Slot, 2008



Sources: U.S. Bureau of the Census, Census 2000; Georgia Department of Early Care and Learning

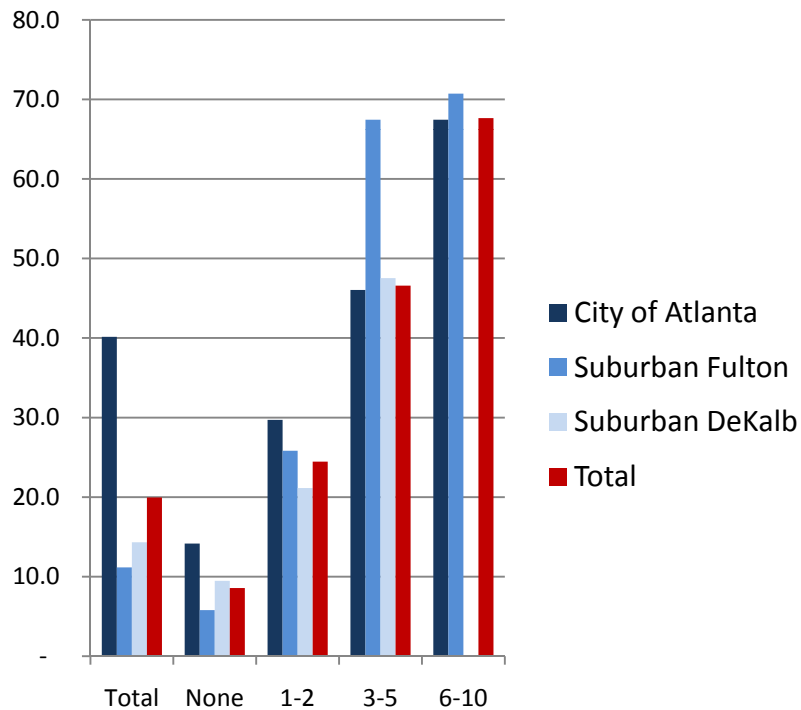
Head Start Centers



Sources: U.S. Bureau of the Census, Census 2000; Georgia Department of Early Care and Learning

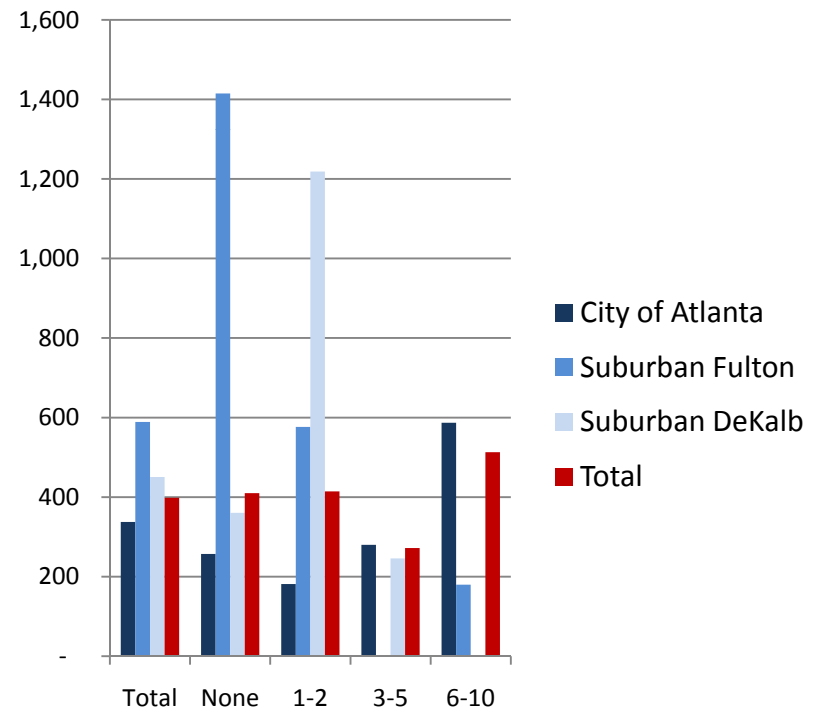
Vulnerable Neighborhoods have higher poverty rates and more poor kids per Head Start center

Percent of Children Ages 0-4 Below Poverty, 1999



Census Tracts by Number of Child Vulnerability Factors

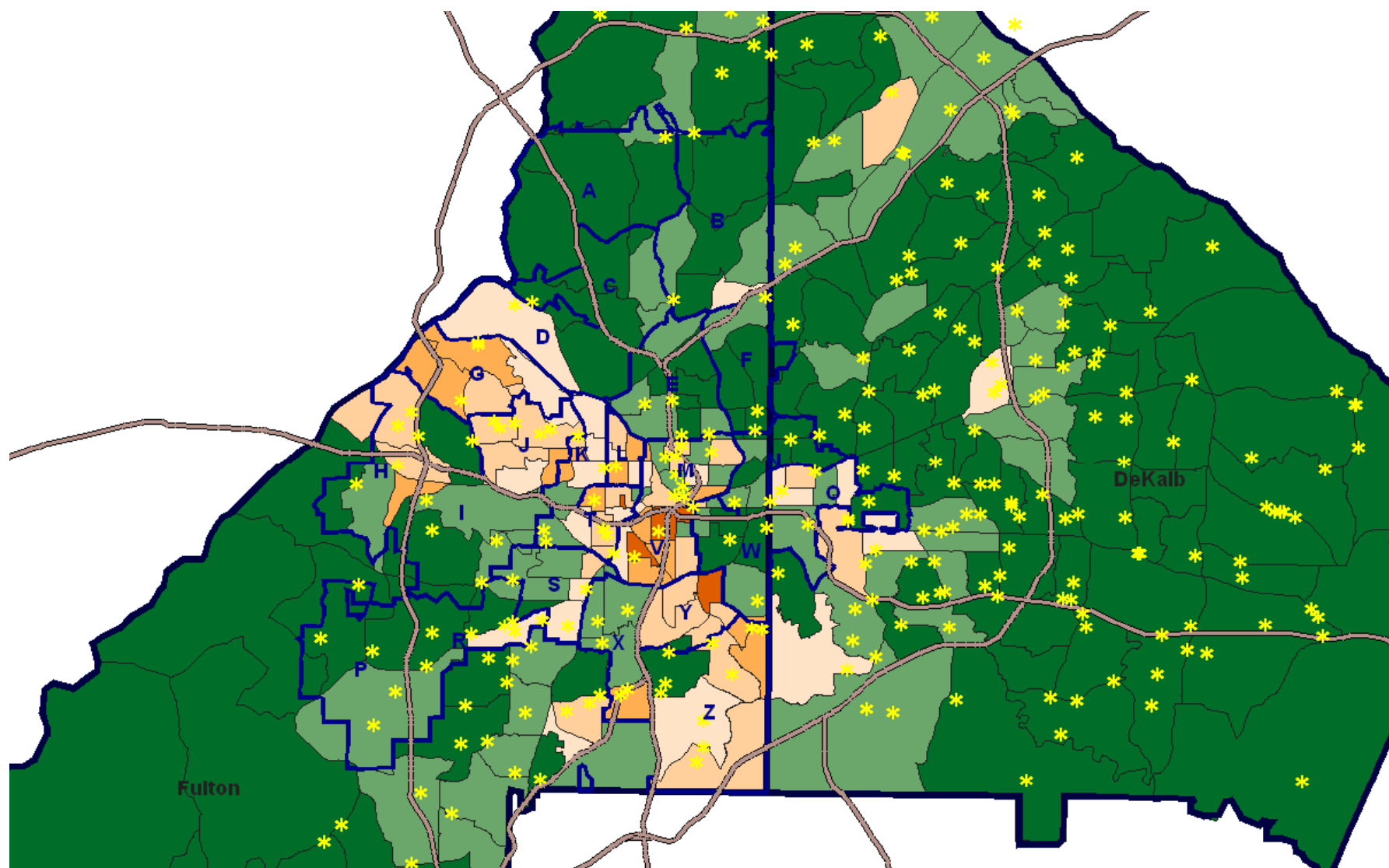
Poor Children Under 5 per Head Start Center, 2008



Census Tracts by Number of Child Vulnerability Factors

Sources: U.S. Bureau of the Census, Census 2000; Georgia Department of Early Care and Learning

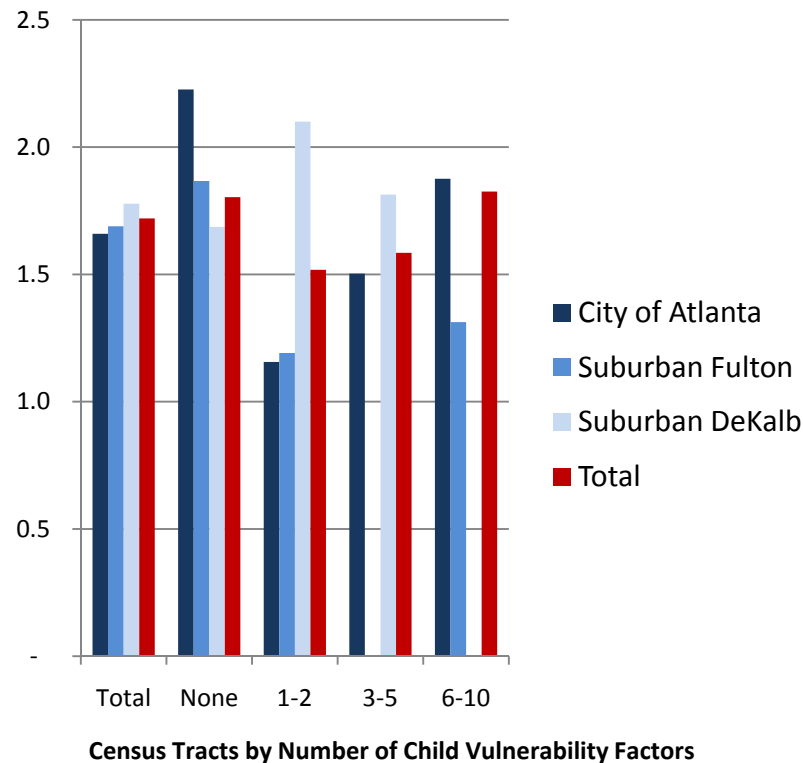
Pre-K Program Sites, 2008



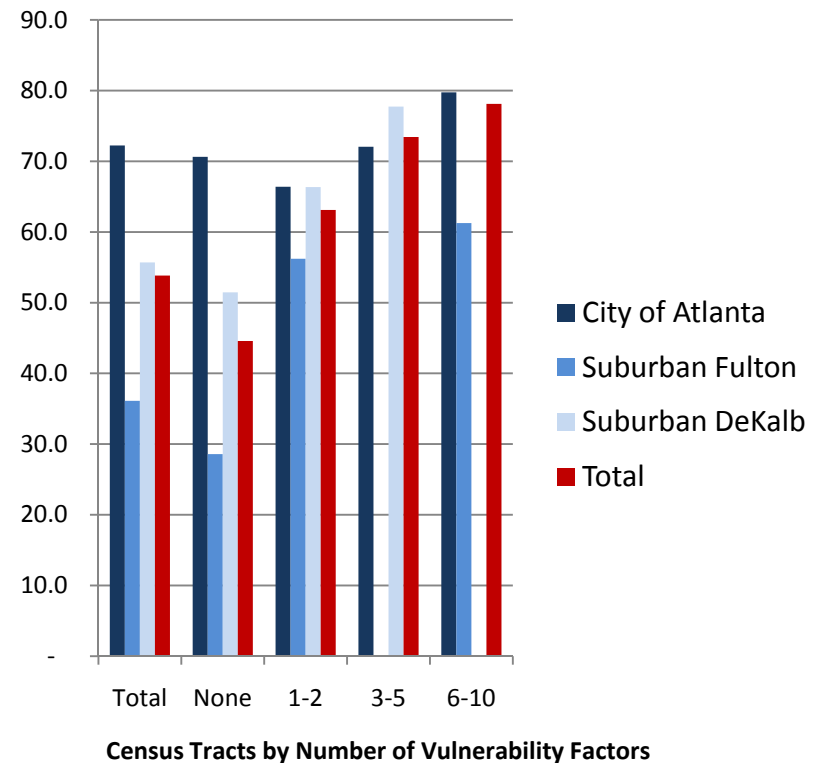
Sources: U.S. Bureau of the Census, Census 2000; Georgia Department of Early Care and Learning

While the percentage of Pre-K slots for at-risk kids is higher in vulnerable neighborhoods, so too is the no. of 4-year olds per Pre-K slot

No. of 4-year olds per Pre-K slot, 2008



Percent of Pre-K Slots for At-Risk Children, 2008



Sources: U.S. Bureau of the Census, Census 2000; Georgia Department of Early Care and Learning

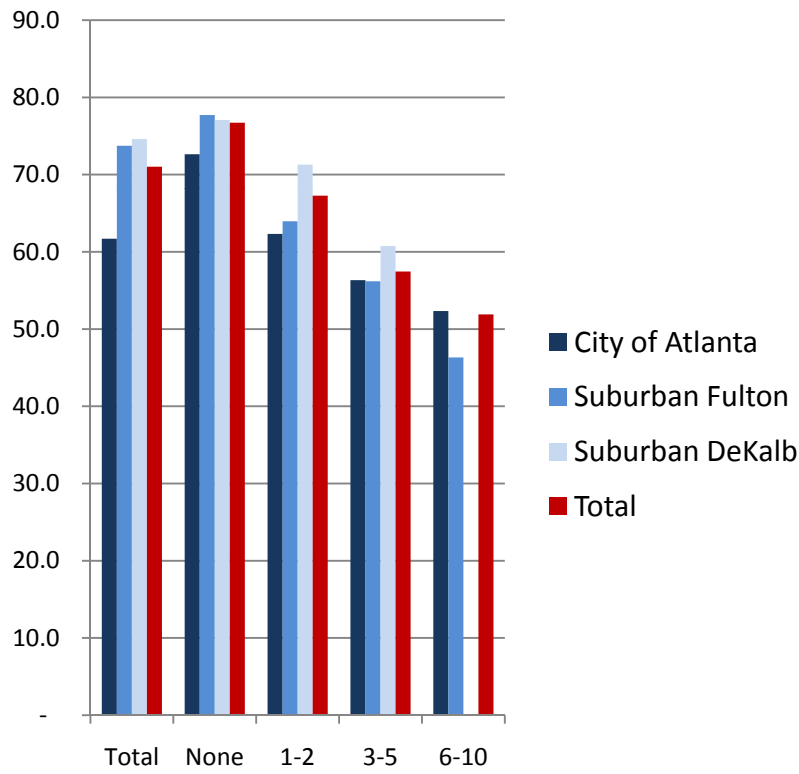
Ready Health Services

- Low birthweight infants
- Prenatal care
- Healthy start births

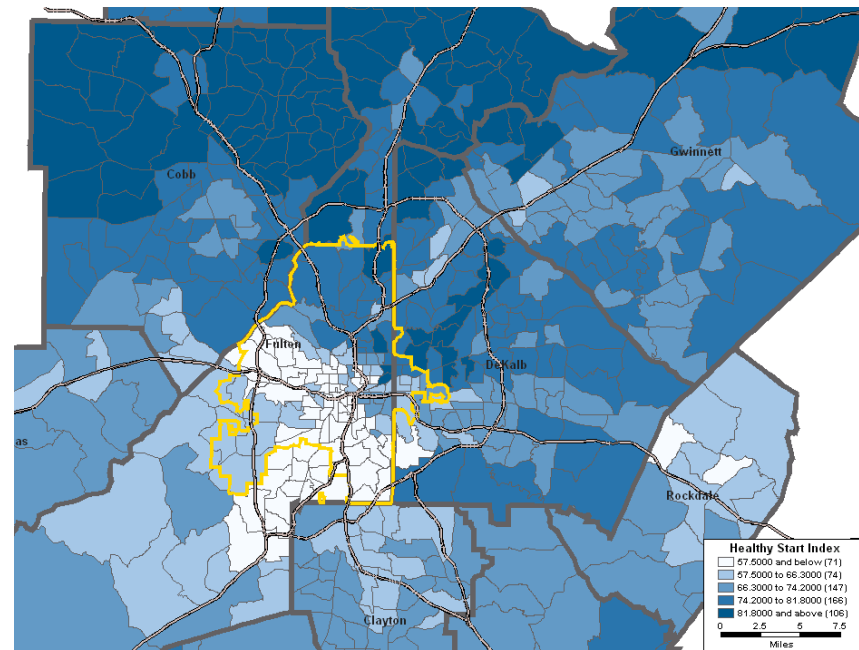
Data Source: Georgia Department of Human Resources, Division of Public Health

Healthy Start Index: Number of infants weighing 2,500 grams or more born to mothers who receive prenatal care in the first trimester, and do not drink alcohol or smoke during pregnancy

Healthy Start Index, 2000-2006

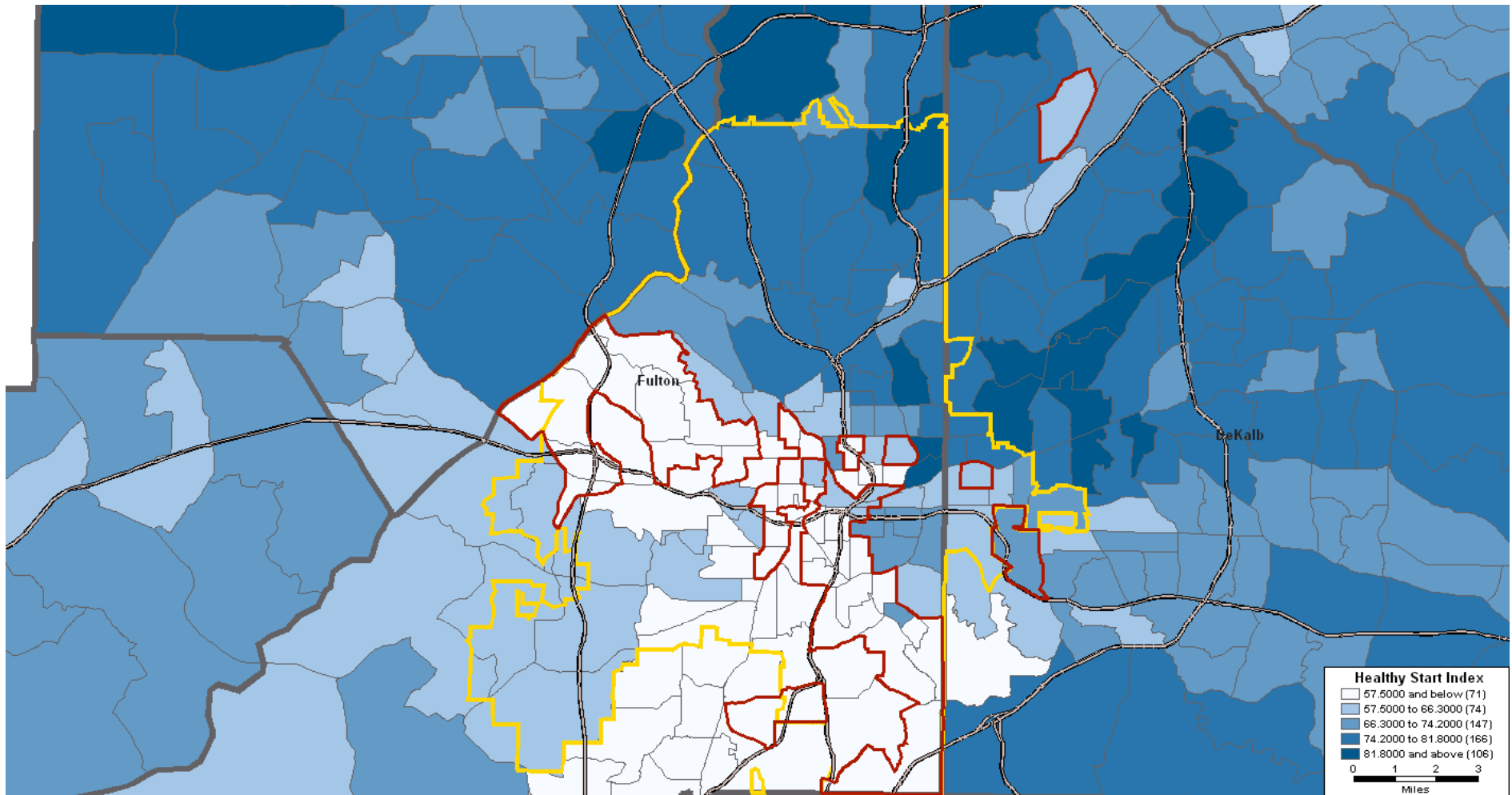


Census Tracts by Number of Child Vulnerability Factors



Sources: U.S. Bureau of the Census, Census 2000; Georgia Department of Human Resources, Division of Public Health

Babies born in vulnerable neighborhoods are least likely to get a healthy start



Healthy Start Index, 2000-2006

Sources: U.S. Bureau of the Census, Census 2000; Georgia Department of Human Resources, Division of Public Health

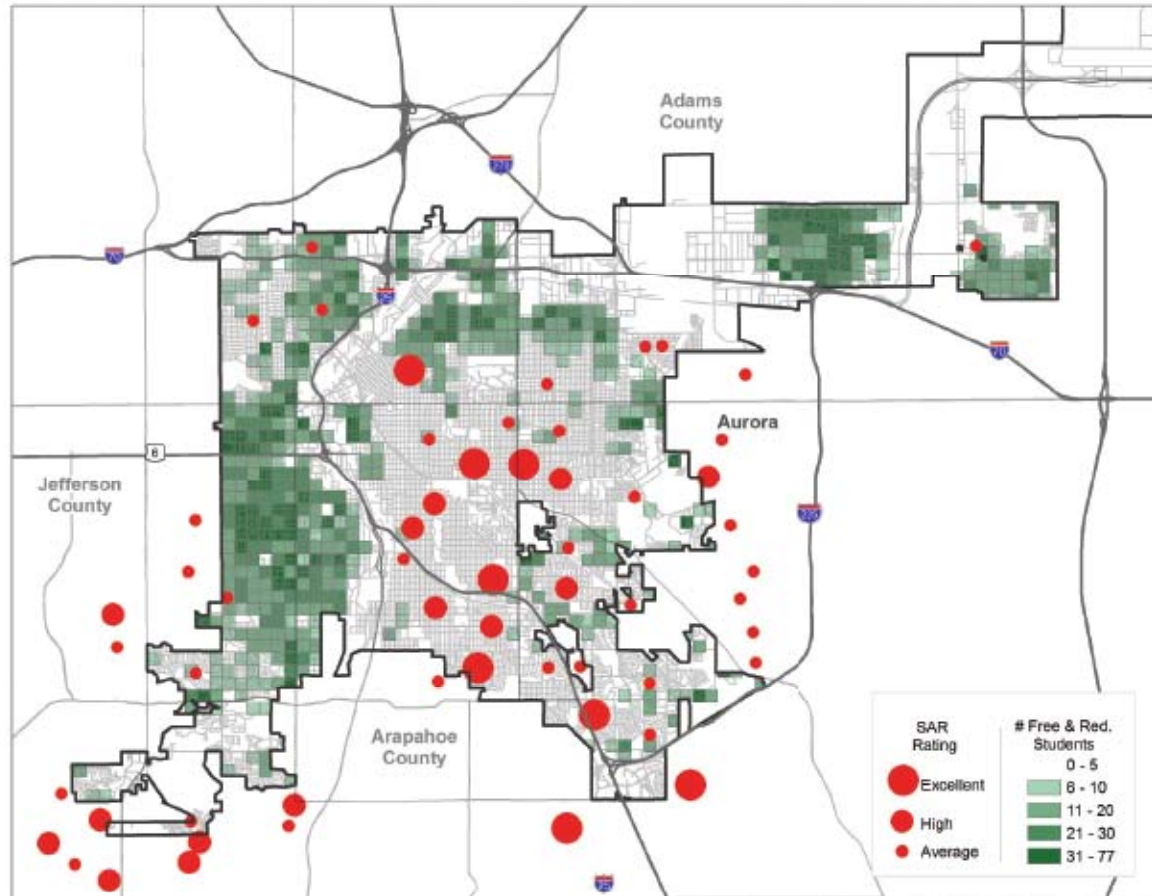
Ready Schools

- AYP Status
- CRCT performance

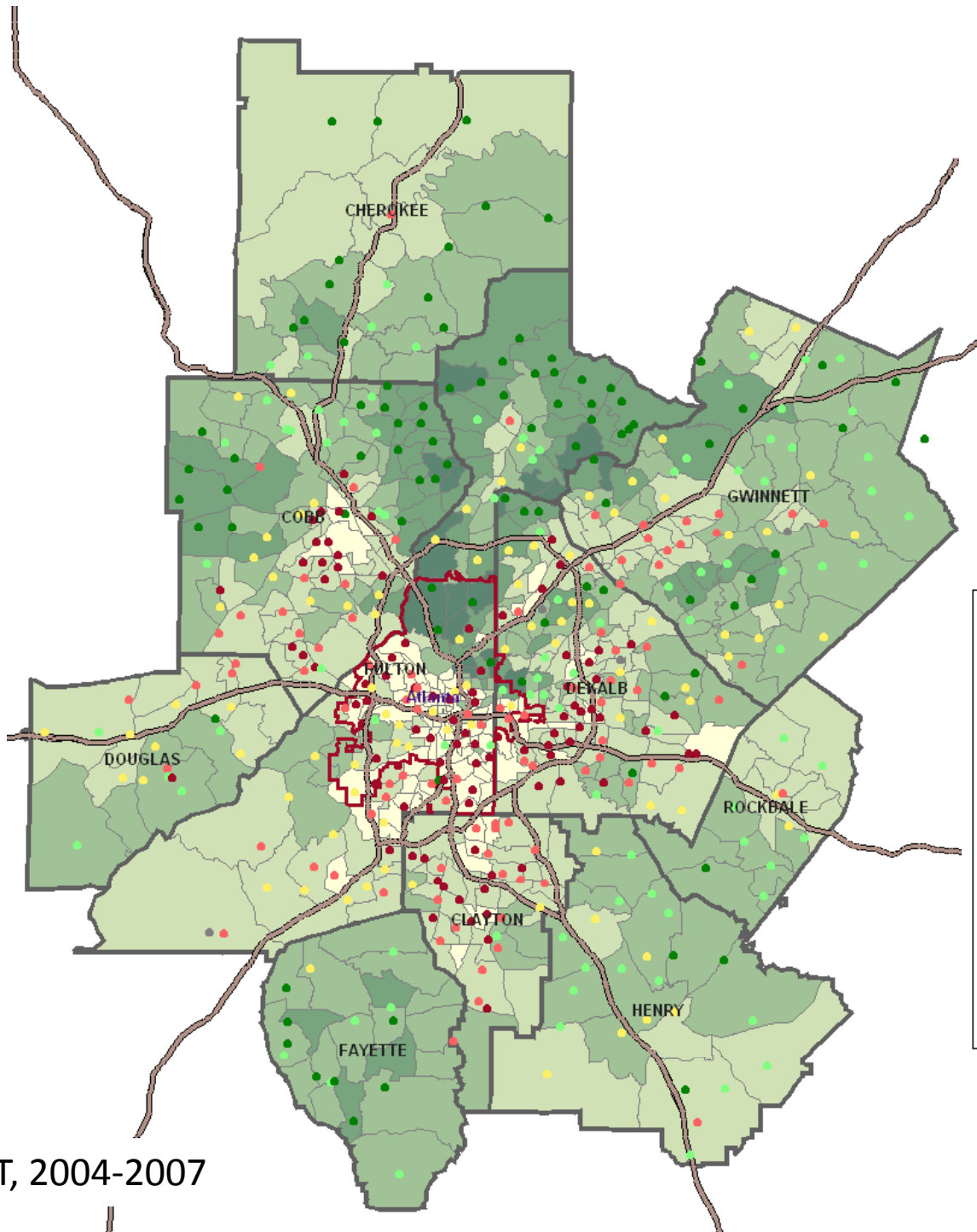
Data Source: Georgia Department of Education

Illustrative Use of Student-Level and School-Level Data: Denver

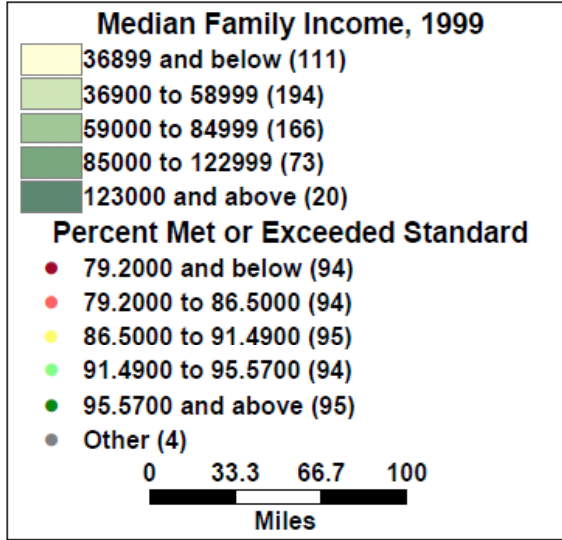
Proximity to Quality Public Education – Free and Reduced Lunch Students, Grades 1 to 3 (2007)



Source: Matthew Berry, Lisa Montagu, Pam Buckley, *Are Denver's Communities Ready for Kids?*, The Piton Foundation, September 2008



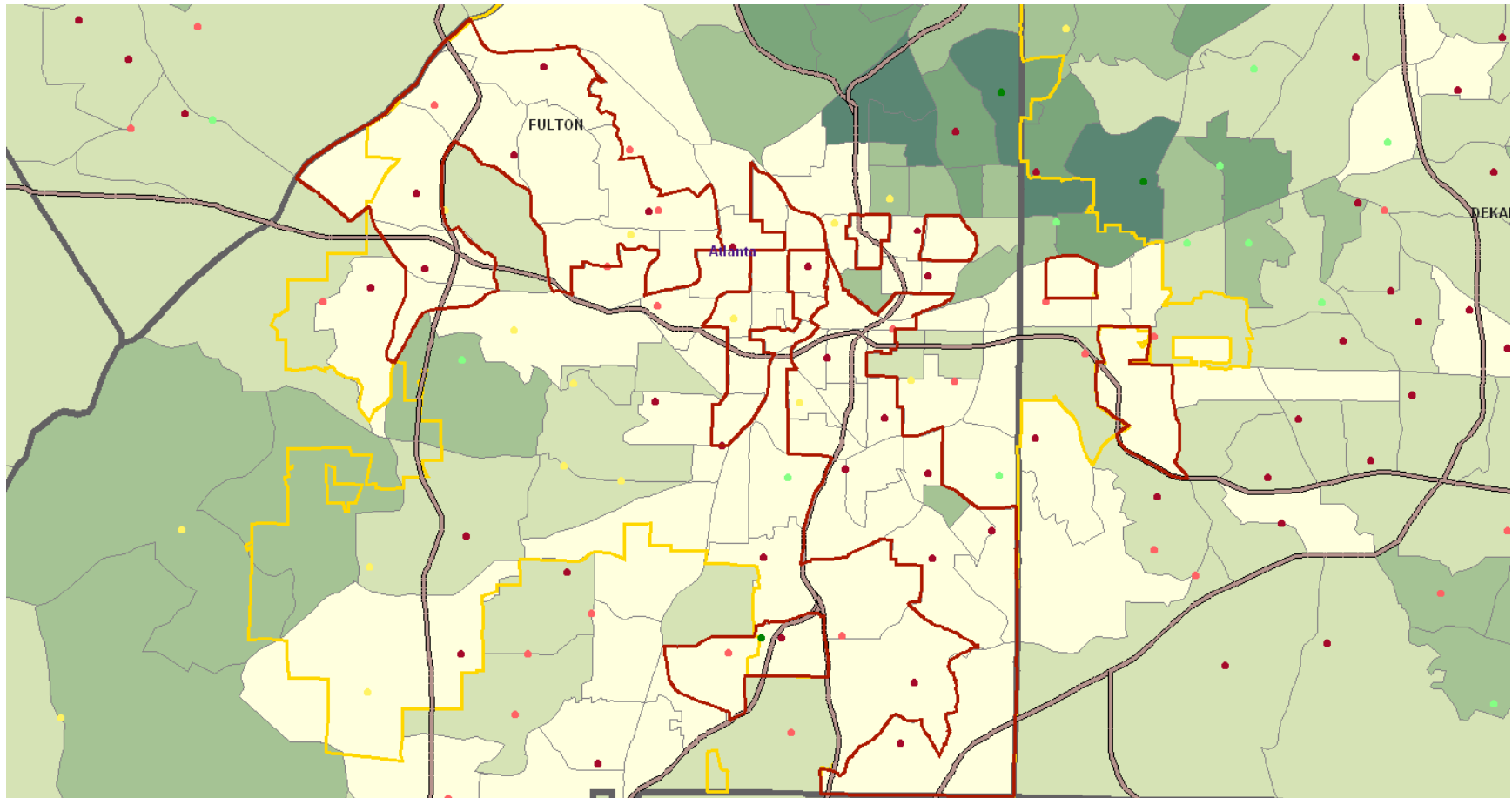
Median family income and 3rd grade reading scores are highly correlated: high income census tracts have schools with high percentages of students meeting or exceeding state standards on the CRCT; low income tracts have much lower levels of student performance.



CRCT, 2004-2007

Sources: U.S. Bureau of the Census, Census 2000 and Georgia Department of Education

Nearly all schools in vulnerable neighborhoods rank in the bottom two quintiles in terms of 3rd grade CRCTs



Sources: U.S. Bureau of the Census, Census 2000 and Georgia Department of Education

Conclusions

- Cumulative disparities are concentrated in census tracts with multiple child-raising vulnerabilities
- Children are more likely to be born at-risk in these neighborhoods and less likely to get ahead through early education and schooling
- Data and maps speak to the importance of taking a place-based strategy for increasing opportunities for vulnerable children
- We have only just begun to tap the potential of using a data-driven strategy for informing investments, program design, and evaluation for increasing the effectiveness of our efforts to improve outcomes for at-risk children and families