

Mapping the Foreclosure Crisis

Fighting Foreclosures: A Call to Action

First Iconium Baptist Church

Atlanta, GA April 4, 2009

Michael J. Rich
Emory University

Director, Office of University-Community Partnerships
Associate Professor, Dept. of Political Science

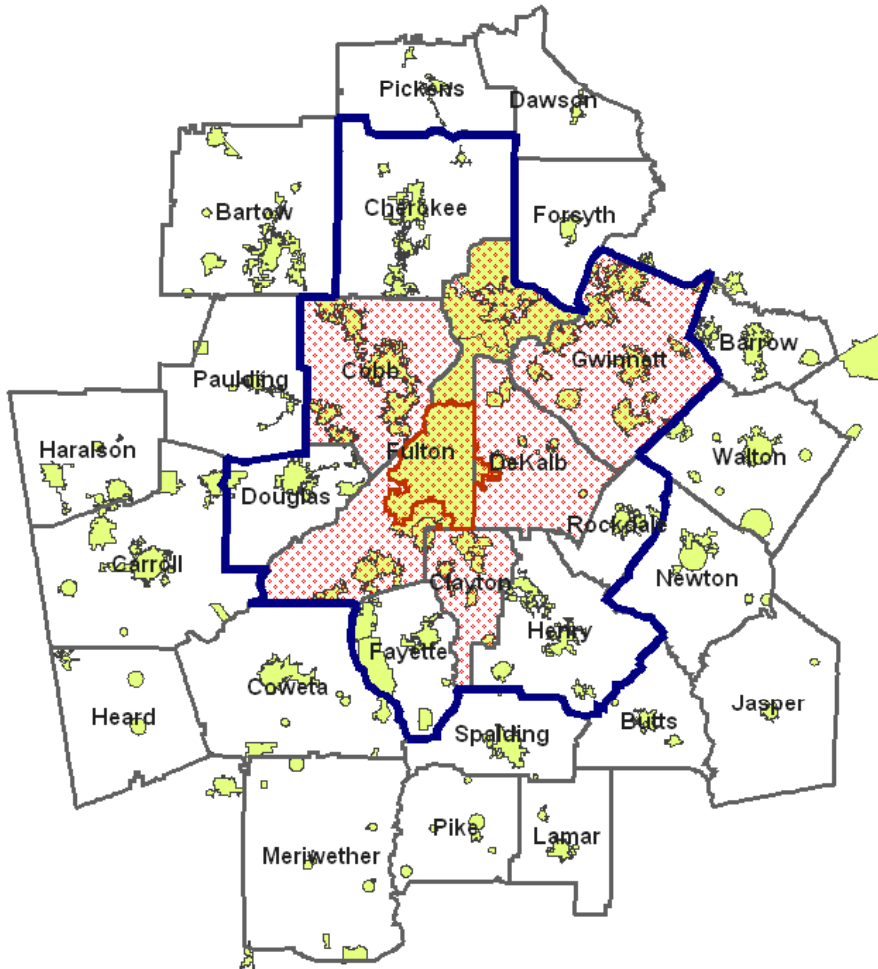
mrich@emory.edu (404) 712-9691



EMORY
UNIVERSITY

Office of
University-Community
Partnerships

Geopolitical Fragmentation



Among 25 Largest Metro Areas:

Local governments per 100,000 residents

- Atlanta ranks 15th (3.5)

Geopolitical fragmentation index

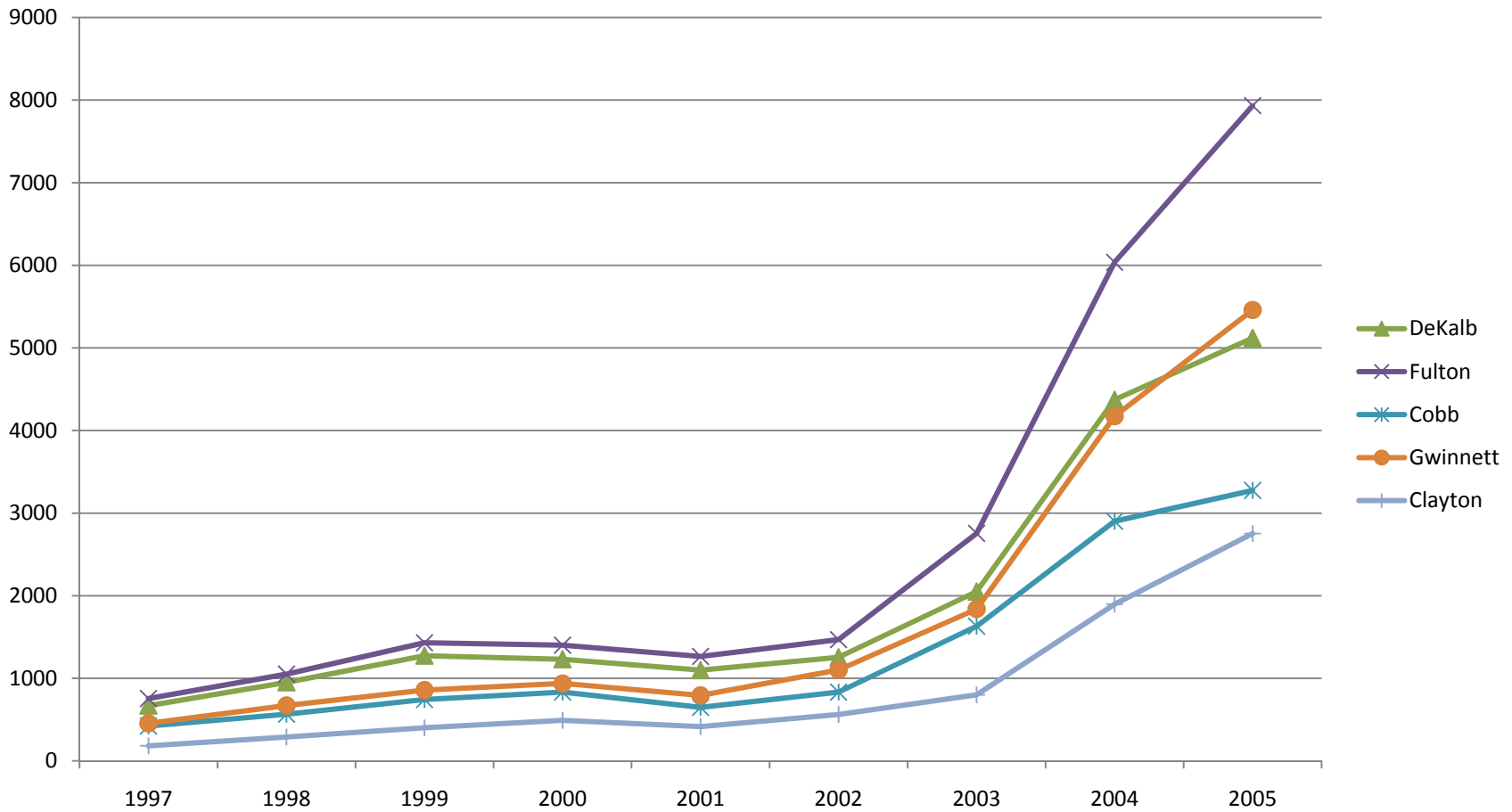
- Atlanta ranks 8th

Source: Myron Orfield, American Metropolitcs.

Governments	Number
Counties	28
Cities	133
Special districts	161
School districts	36
TOTAL GOVERNMENTS	358

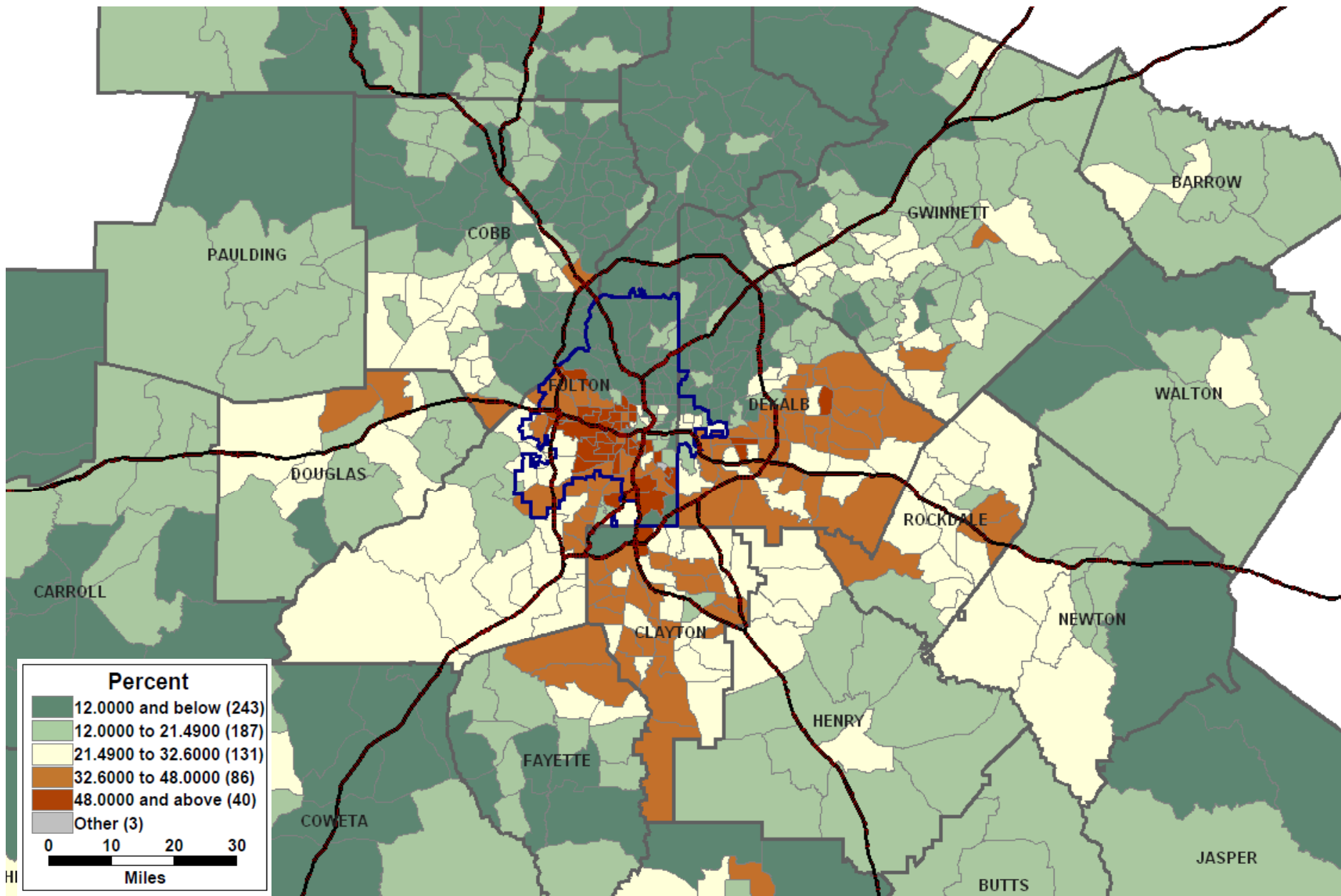
Source: U.S. Bureau of the Census, Census of Governments, 2002

Subprime Loans—Home Purchase 1997 - 2005



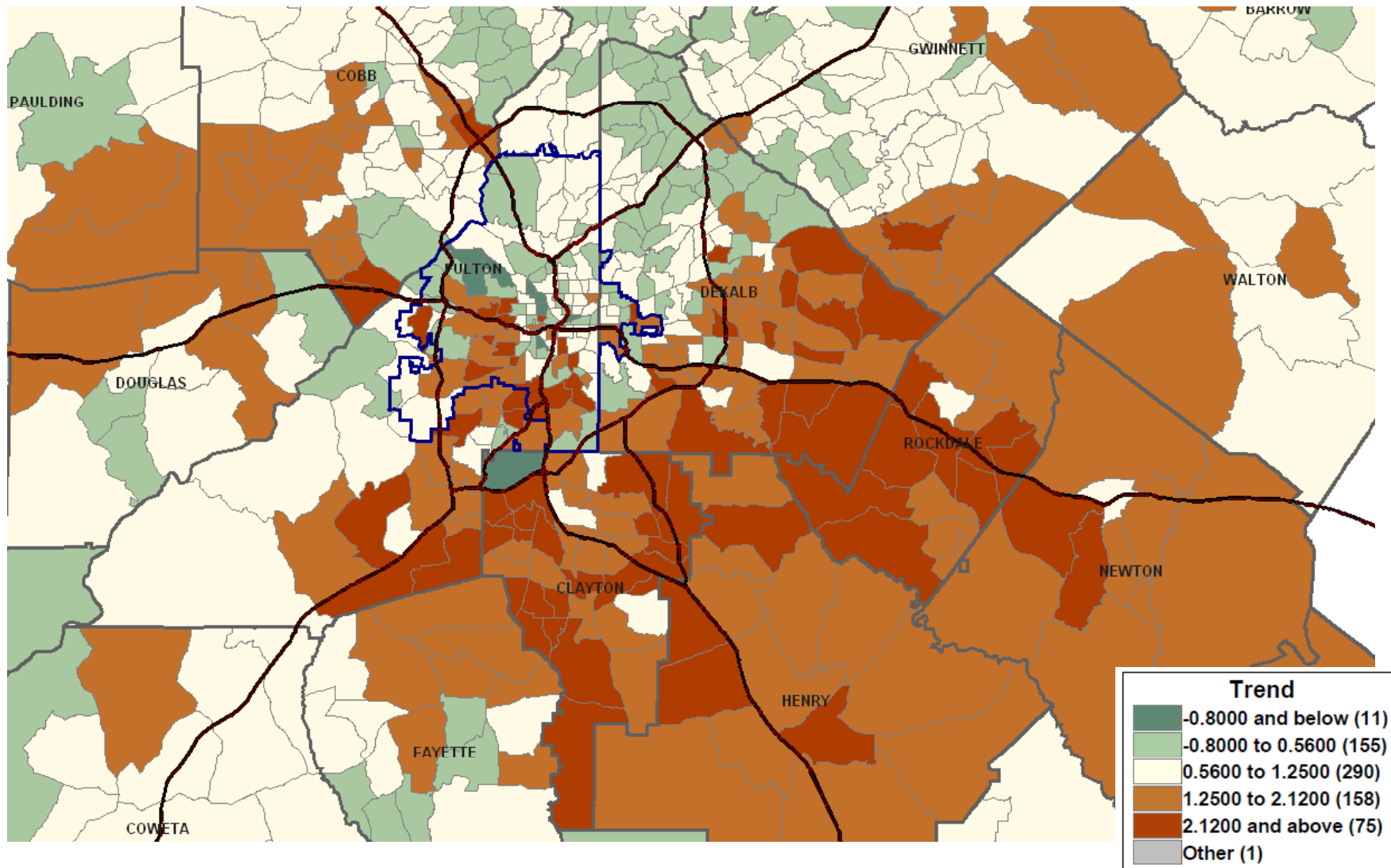
Source: Home Mortgage Disclosure Act Data, various years

Percent of Home Purchase Mortgages by Subprime Lenders, 2005



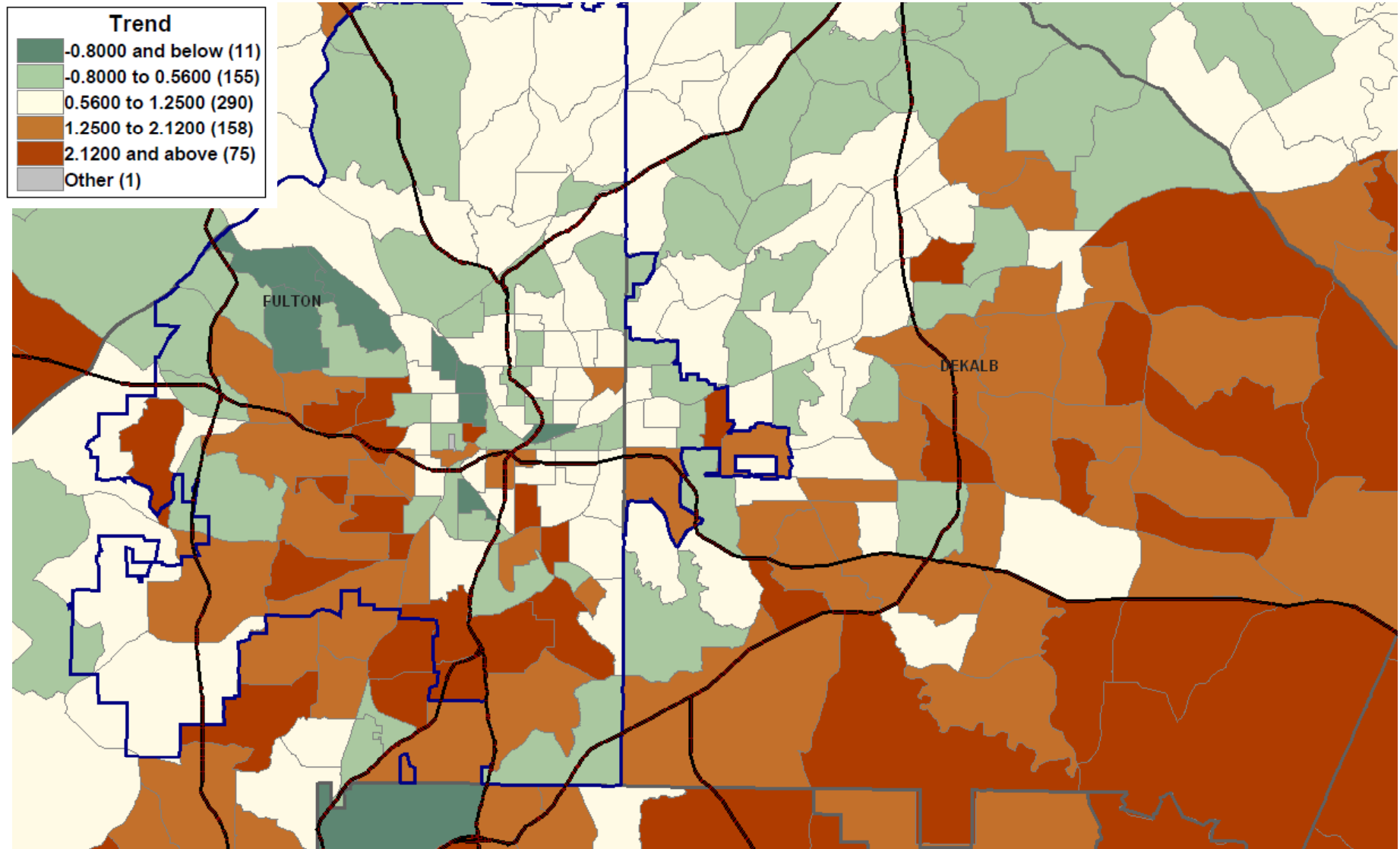
Subprime Lending Trajectories

Home Purchase Mortgages: 3-Year Moving Averages, 1997 - 2005



Subprime Lending Trajectories

Home Purchase Mortgages: 3-Year Moving Averages, 1997 - 2005



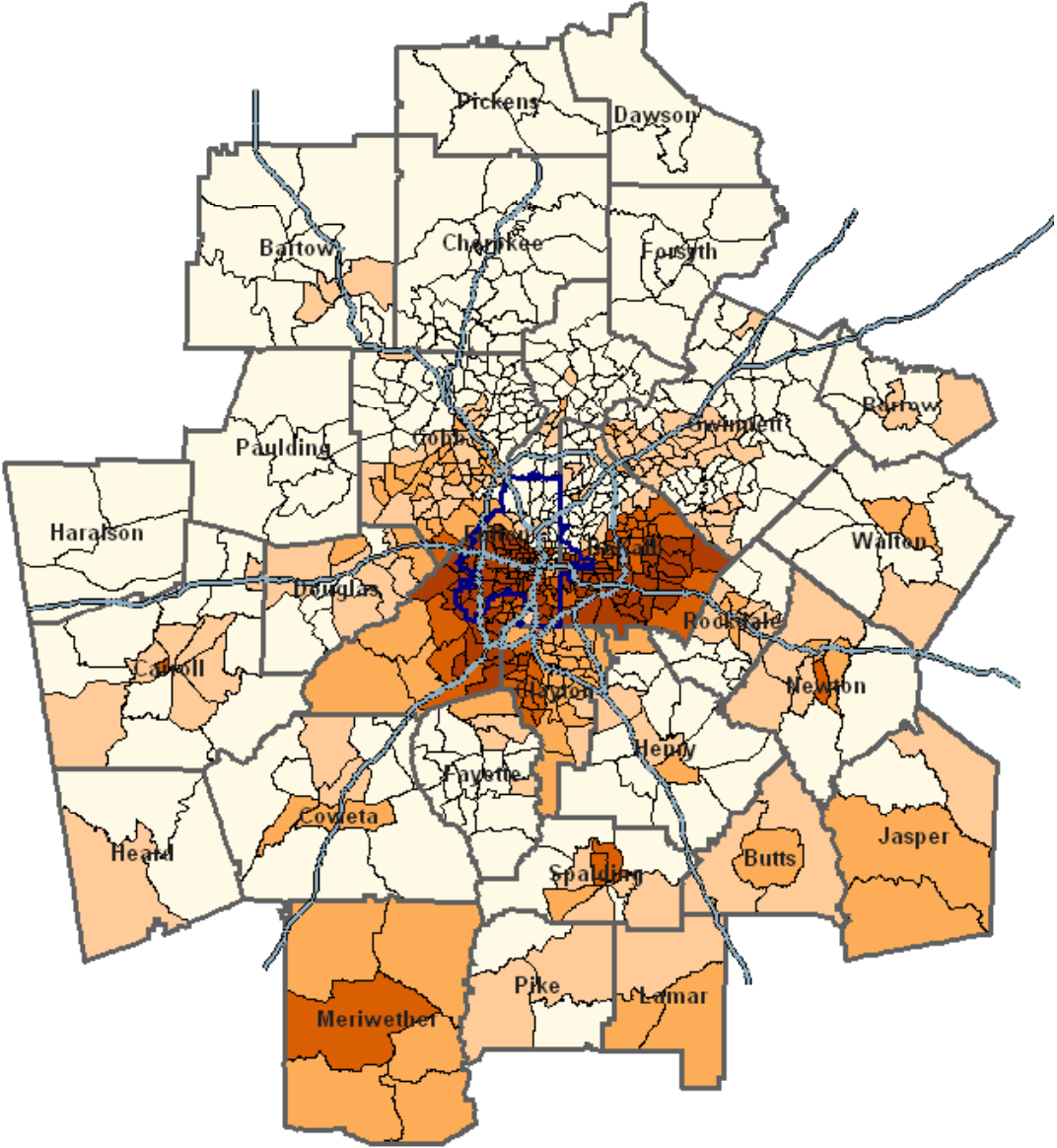
Subprime Lending by Race

Mean percent of mortgage loans by subprime lender by type, census tracts

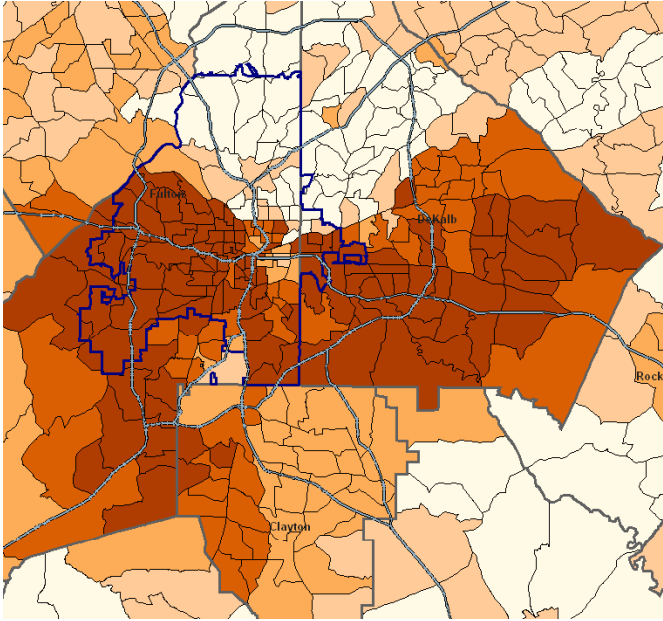
	Home Purchase			Refinance		
	Black	Hispanic	White	Black	Hispanic	White
Fulton County						
1997	21.1	15.9	9.5	43.5	16.3	26.0
2000	18.6	4.6	6.1	31.8	23.6	15.0
2003	28.2	20.2	16.0	19.9	11.8	8.5
2005	40.5	27.6	21.5	29.3	26.5	16.3
DeKalb County						
1997	16.8	11.3	10.0	43.5	22.7	23.3
2000	19.8	15.4	6.3	45.3	26.6	17.4
2003	24.7	11.6	11.8	17.1	11.6	8.6
2005	35.4	24.3	15.7	31.0	32.7	16.4
City of Atlanta						
1997	25.1	25.4	11.2	53.2	14.3	31.4
2000	19.8	4.4	5.4	30.3	25.8	13.2
2003	31.0	19.5	15.5	21.2	15.1	8.7
2005	42.1	33.6	24.9	28.8	26.5	16.3
MSA Total (28 county)						
1997	14.0	9.1	6.2	42.1	18.6	20.1
2000	17.9	8.3	5.8	39.1	22.1	15.2
2003	25.1	12.5	12.5	18.4	11.0	8.0
2005	36.1	22.5	15.3	31.6	28.3	15.5

Source: Home Mortgage Disclosure Act Data, various years.

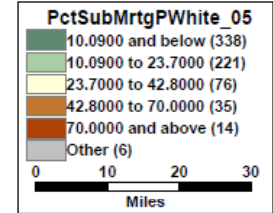
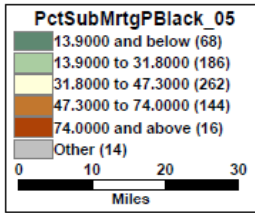
Percent Black, 2000



Percent	
13.0000 and below	(292)
13.0000 to 30.0000	(133)
30.0000 to 53.0000	(85)
53.0000 to 80.0000	(62)
80.0000 and above	(118)



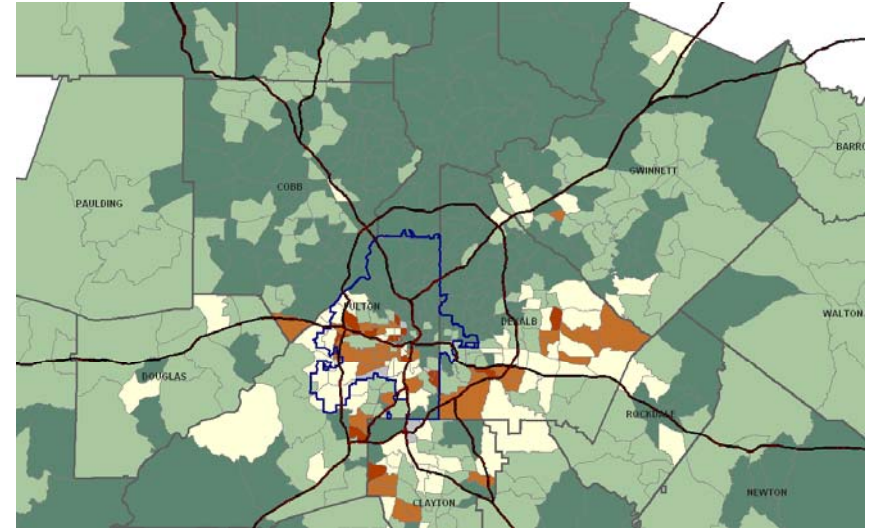
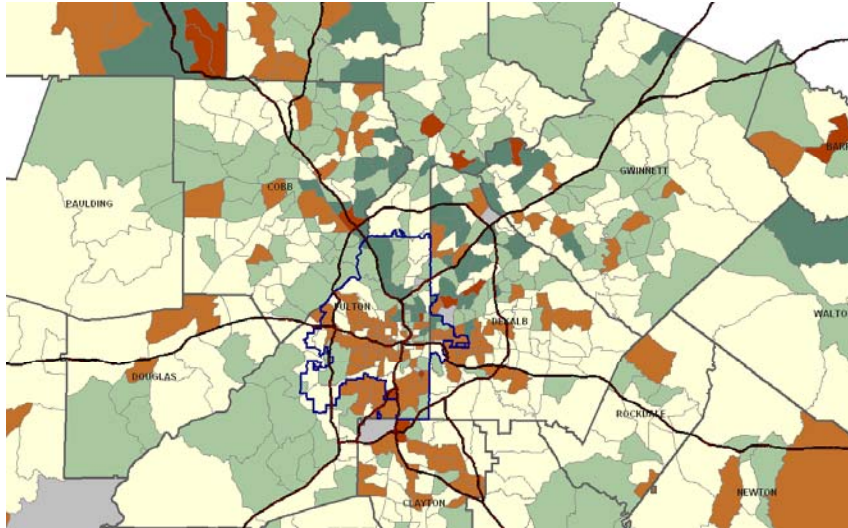
Subprime Lending by Race



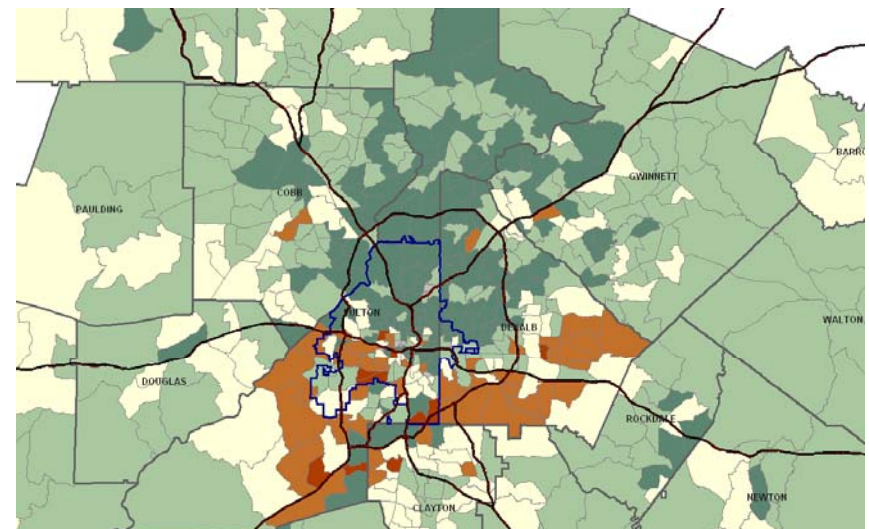
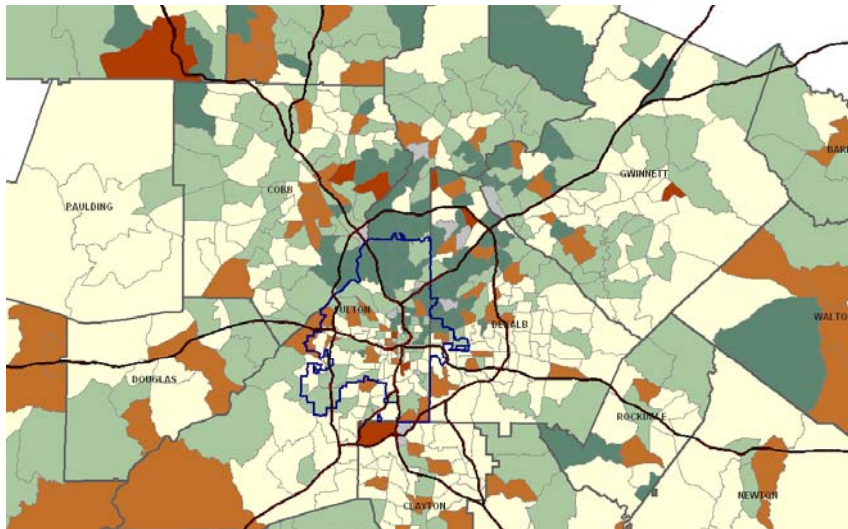
Black

White

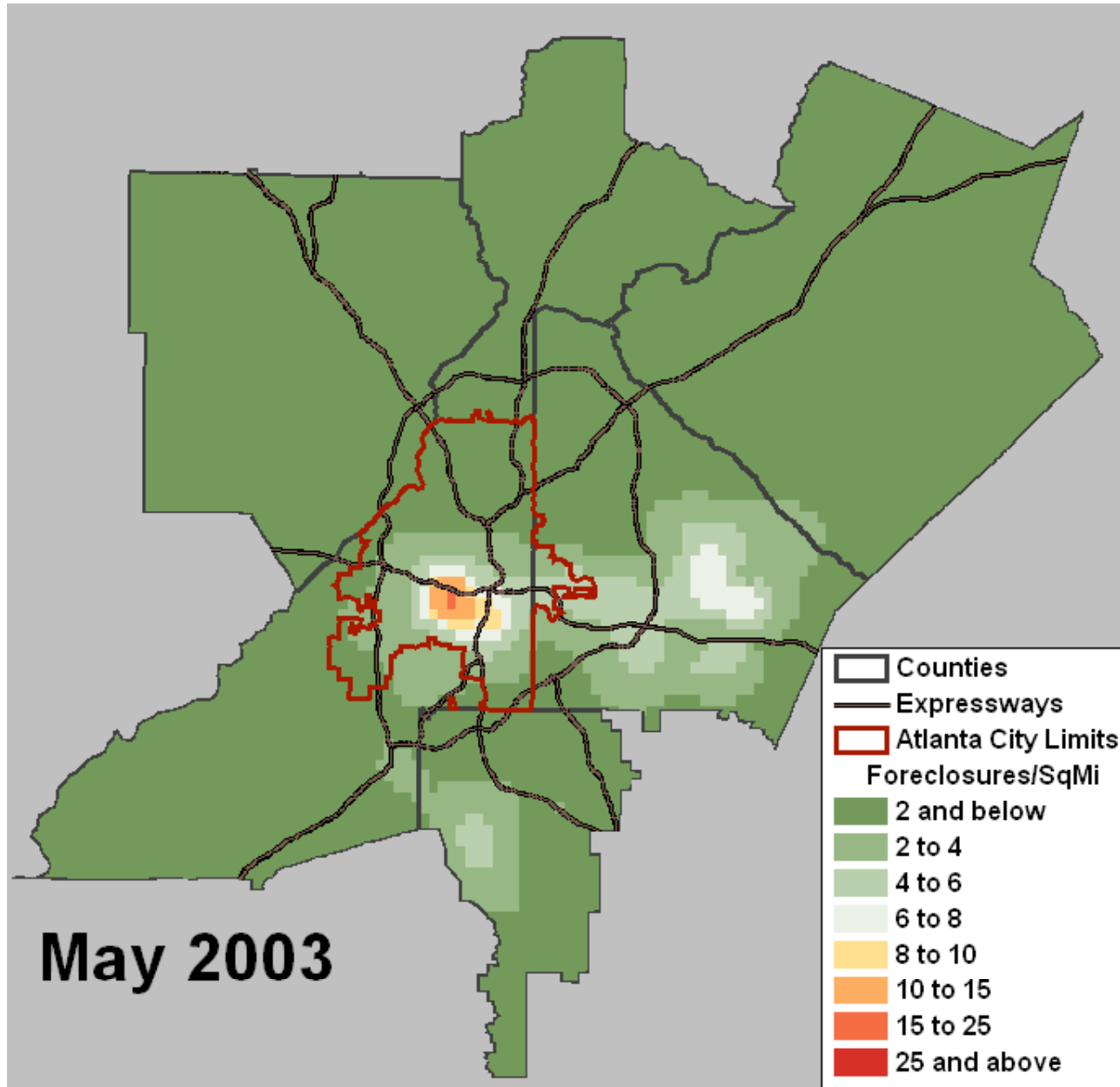
Home Purchase



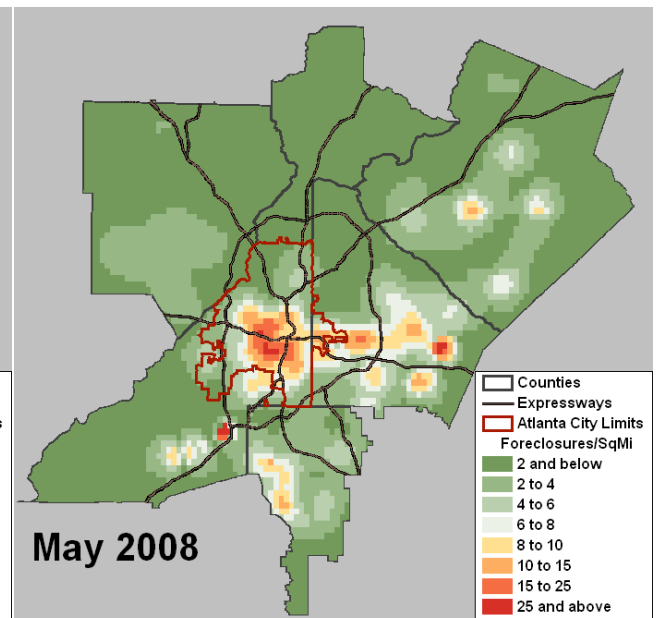
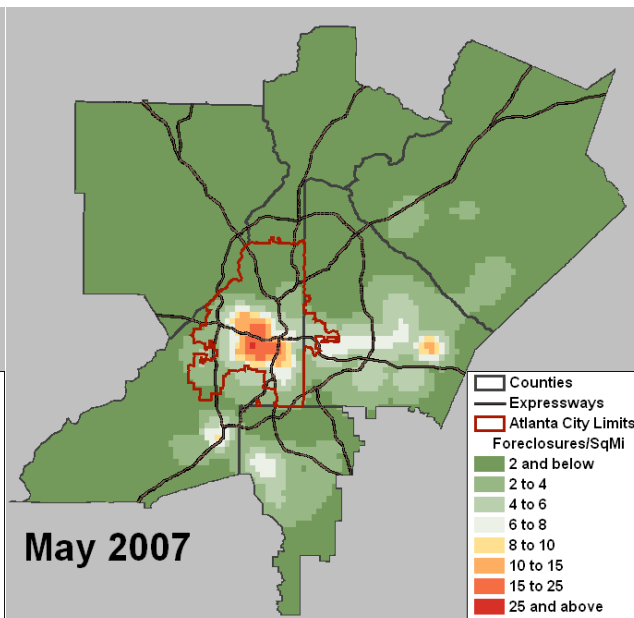
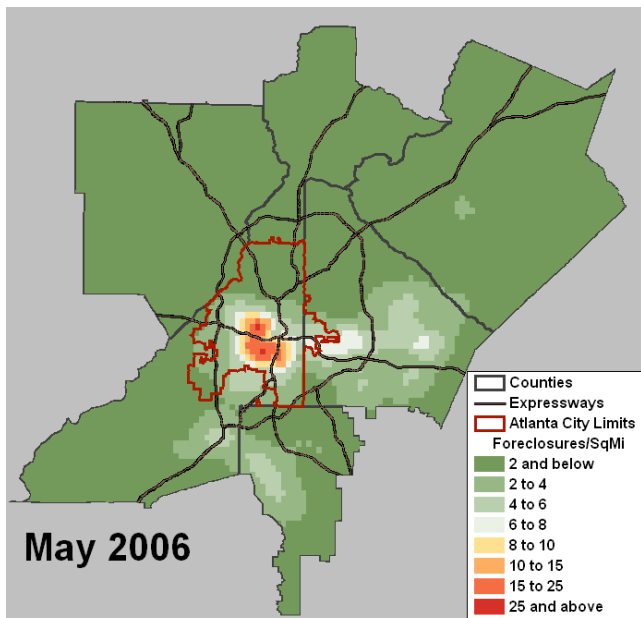
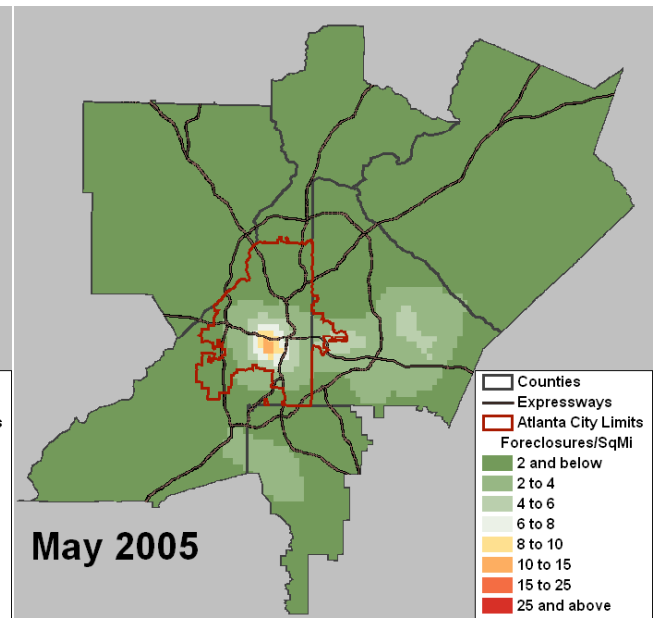
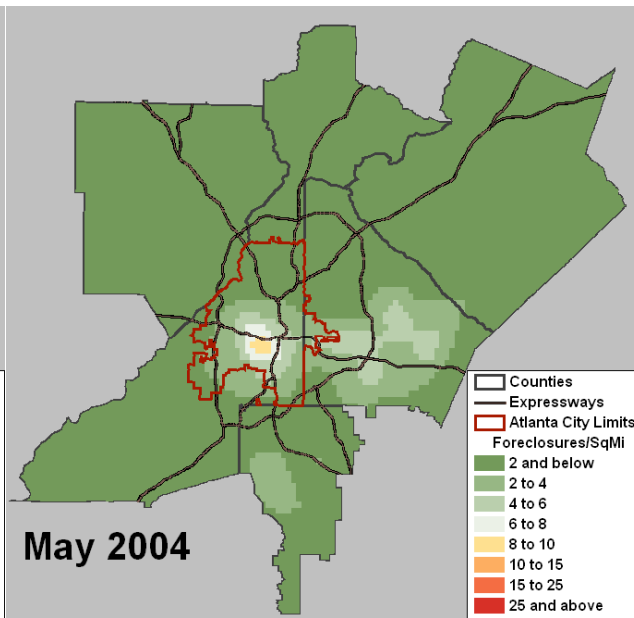
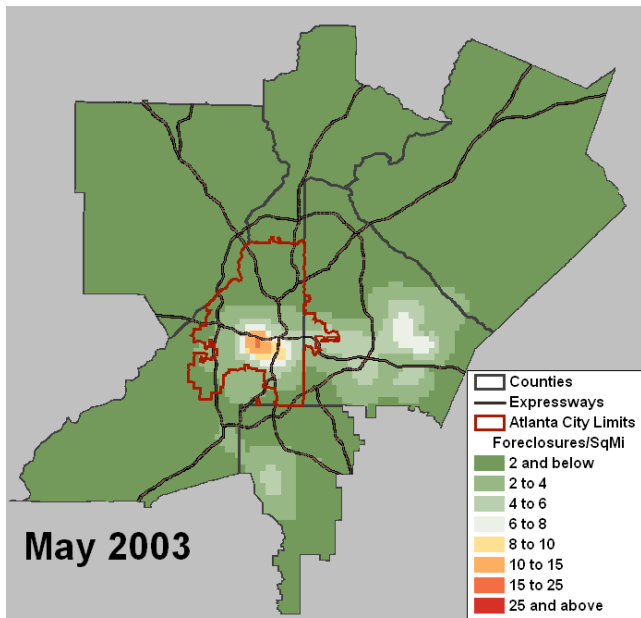
Refinance



Foreclosure Filings Per Square Mile, May 2003



Source: Equity Depot, Atlanta Foreclosure Report

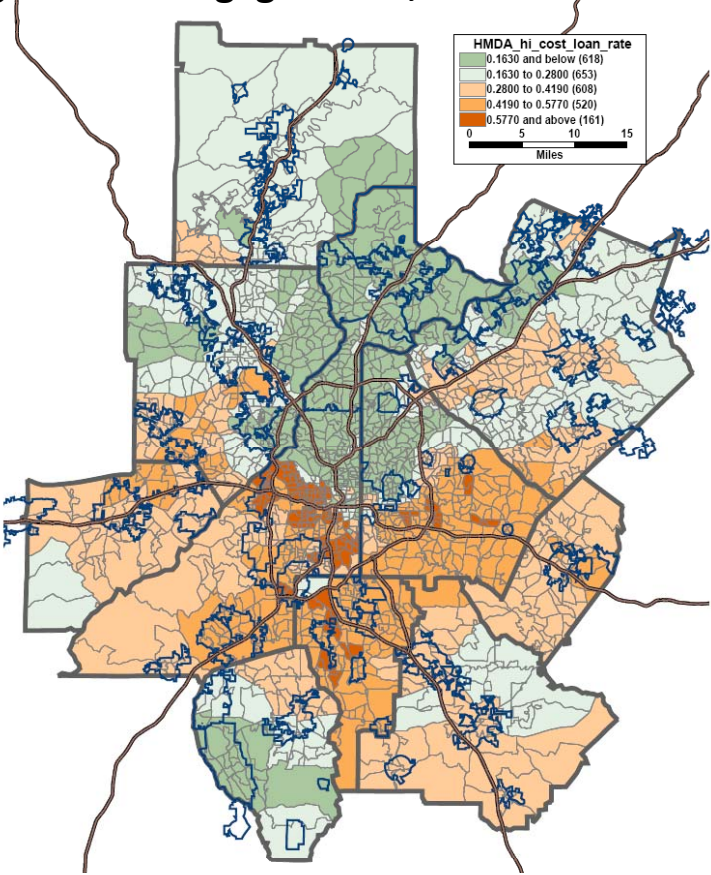


Source: Equity Depot, Atlanta Foreclosure Report

Source: Equity Depot

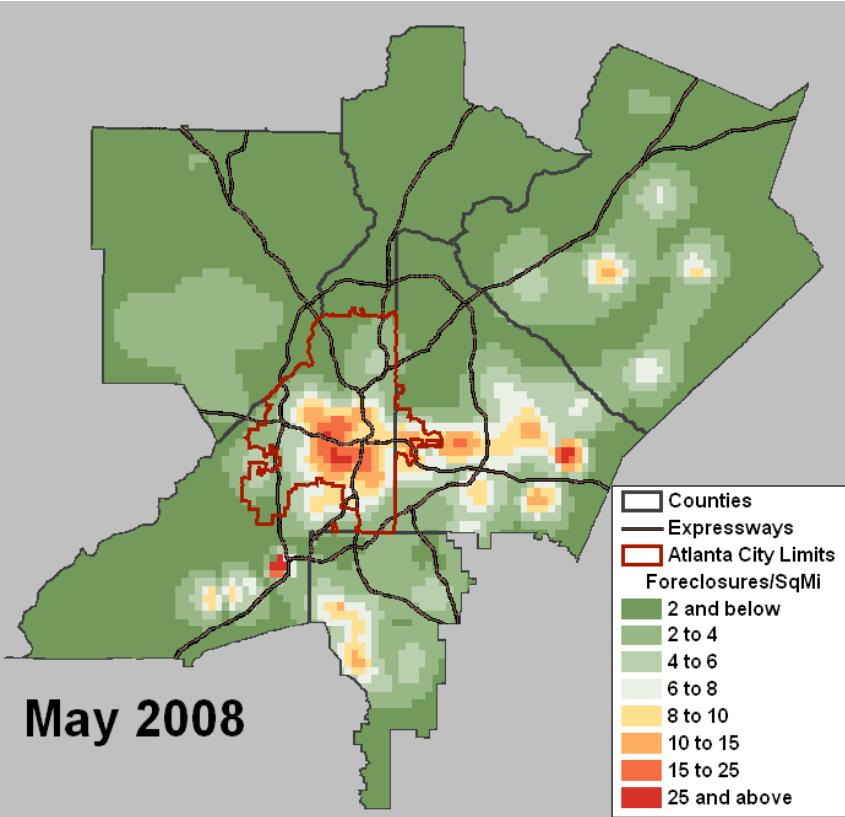
High Cost Lending and Foreclosures

High Cost Mortgage Loans, 2004-2006



Source: Home Mortgage Disclosure Act Data, various years

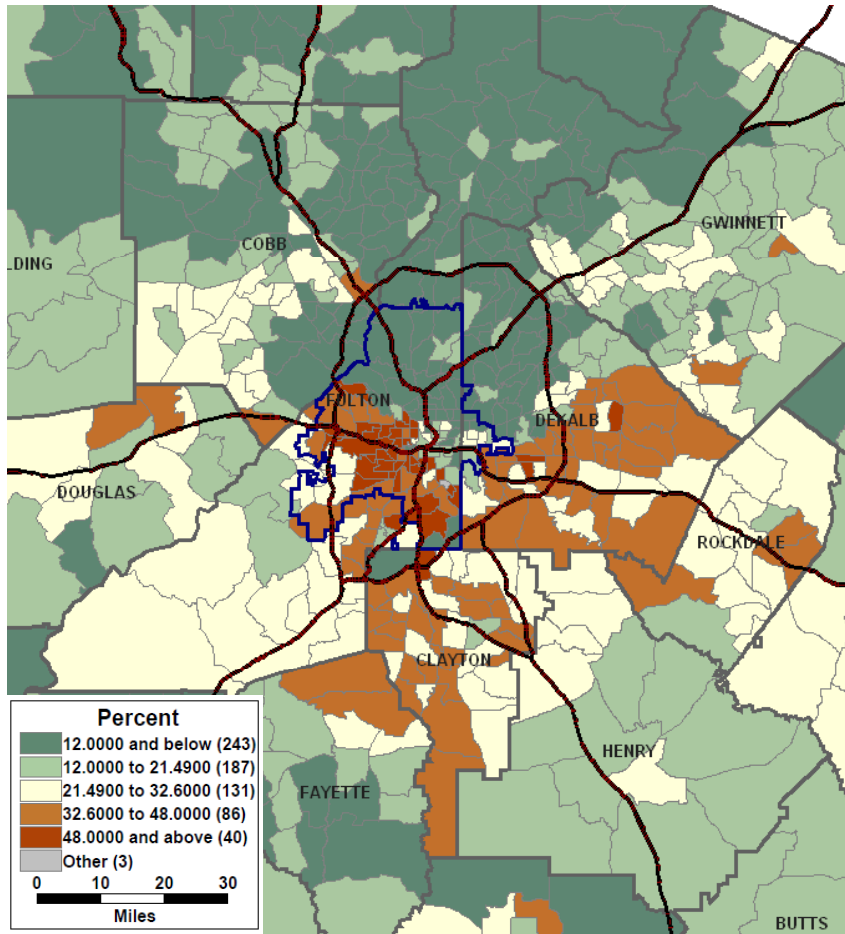
Foreclosure Filings, May 2008



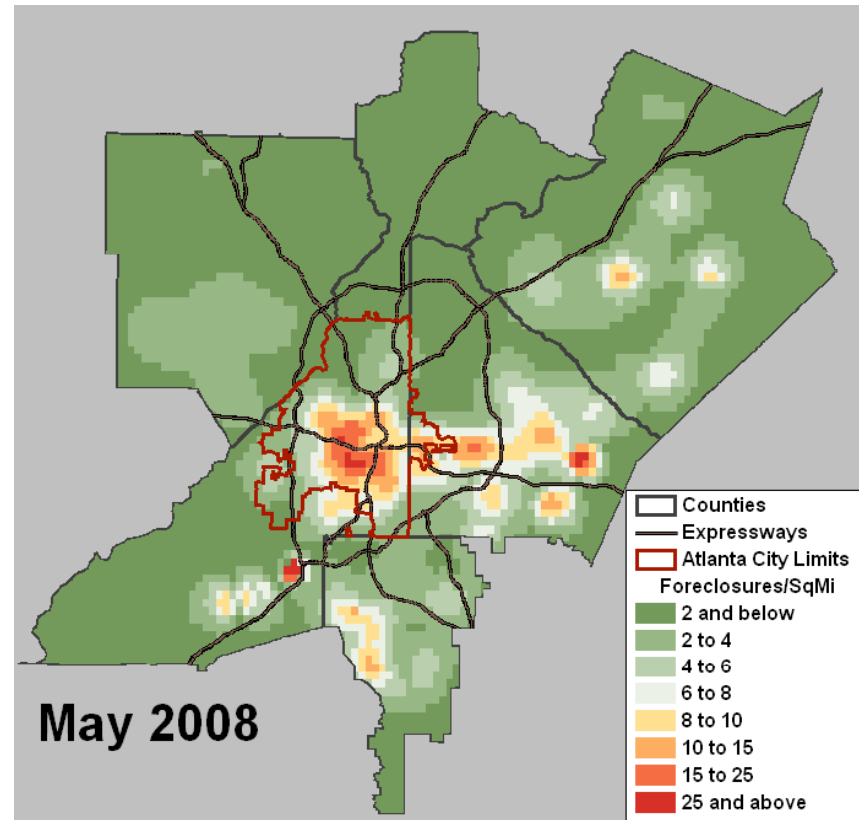
Source: Equity Depot

Subprime Lending and Foreclosures

Percent Subprime Home Purchase, 2005



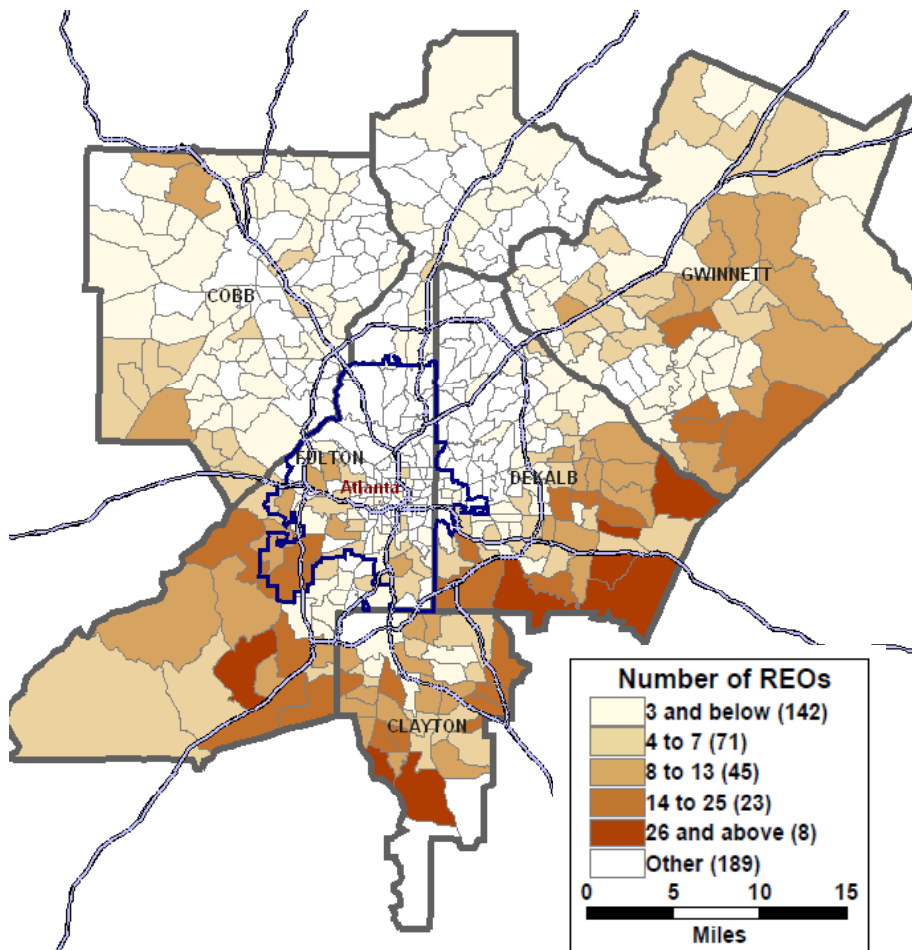
Foreclosure Filings, May 2008



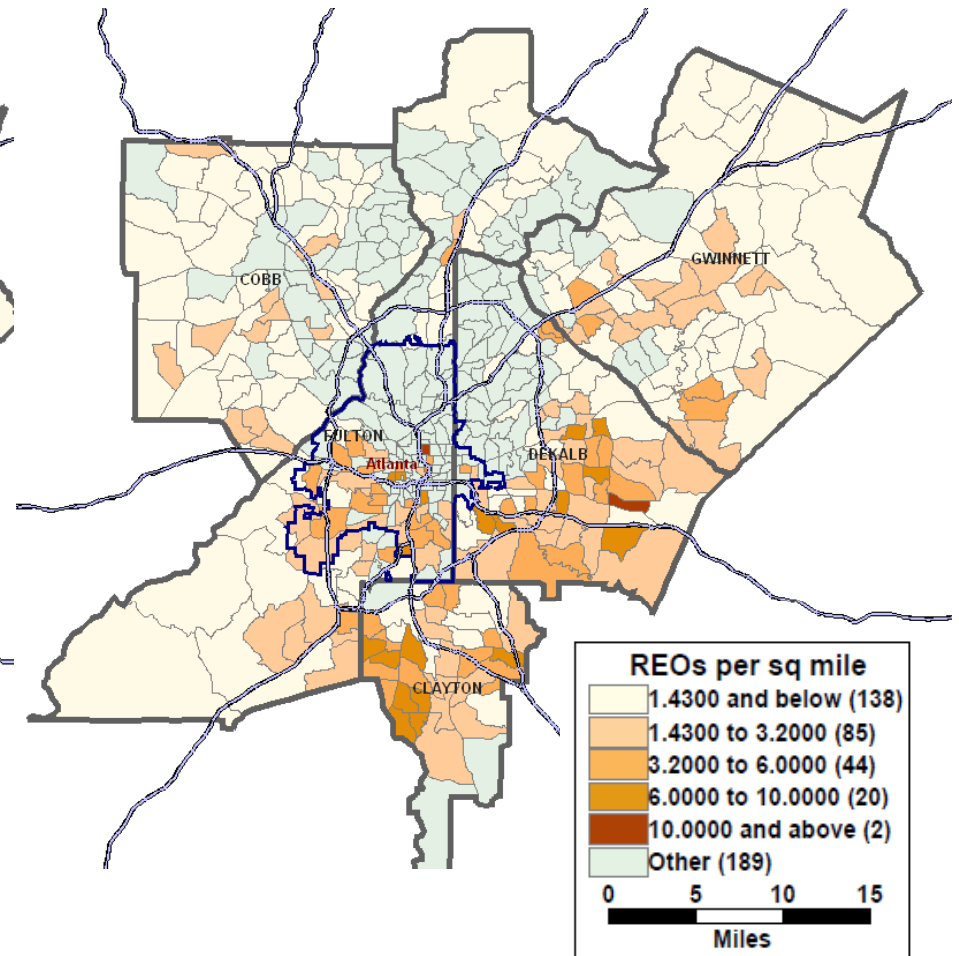
REO Properties, November 2008

Fannie Mae Listing

Number of REOs

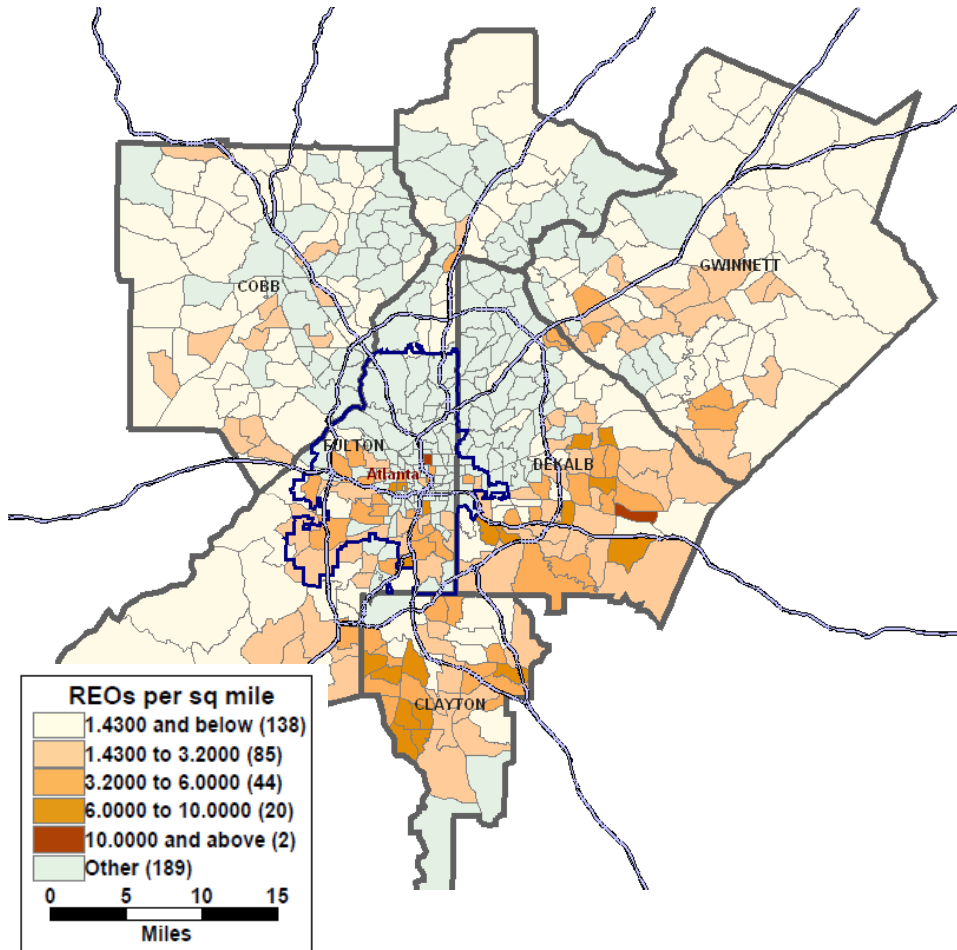


REOs per square mile



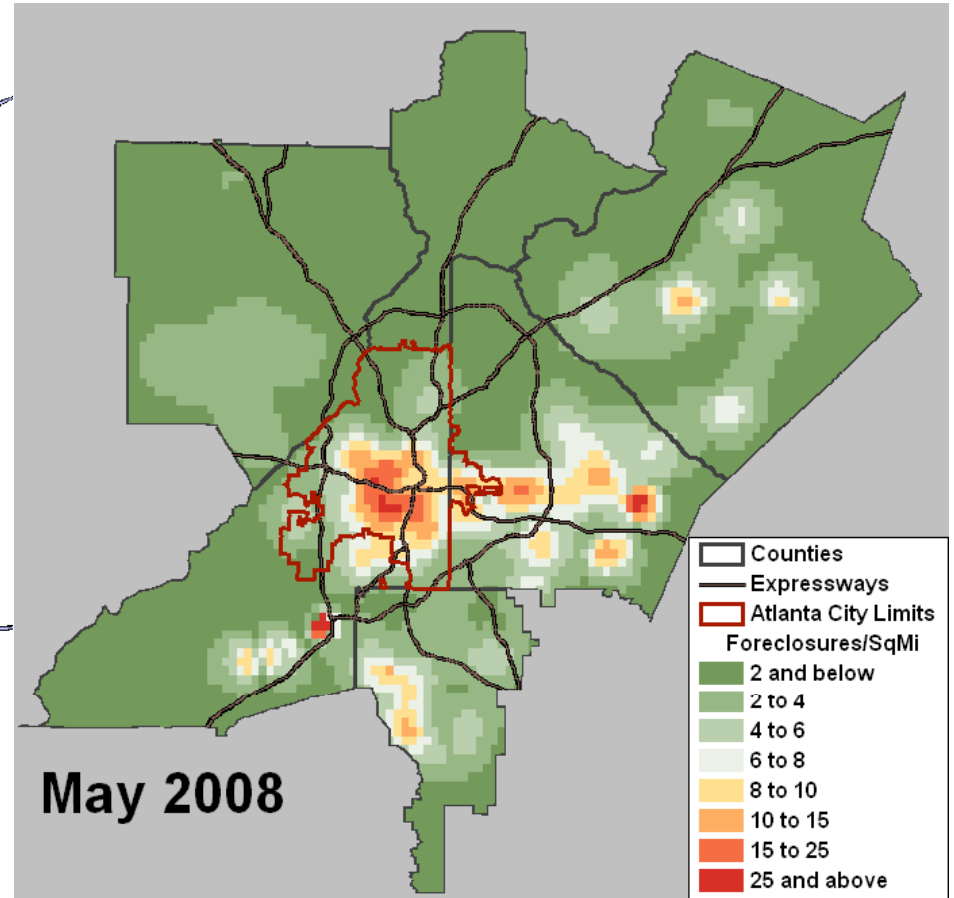
REOs and Foreclosures

No. of REOs per sq. mile



Source: Fannie Mae

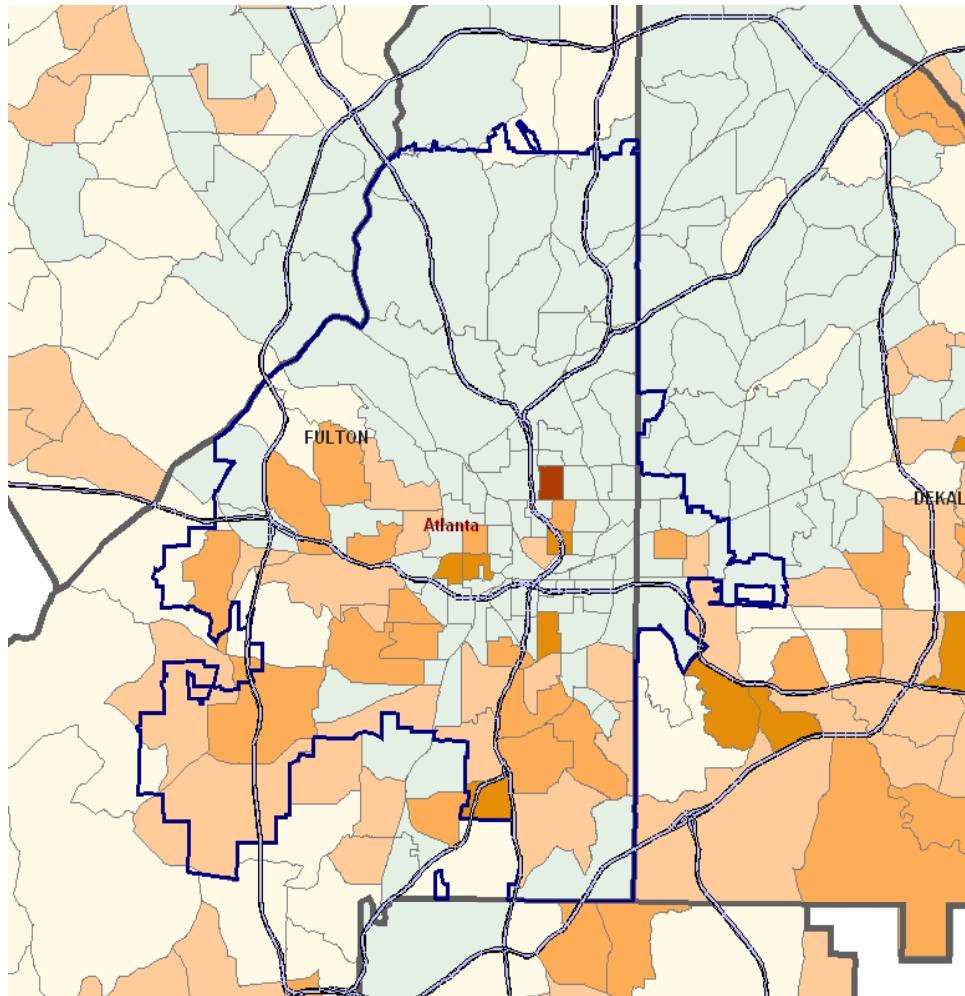
No. of Foreclosure Filings per sq. mile



Source: Equity Depot

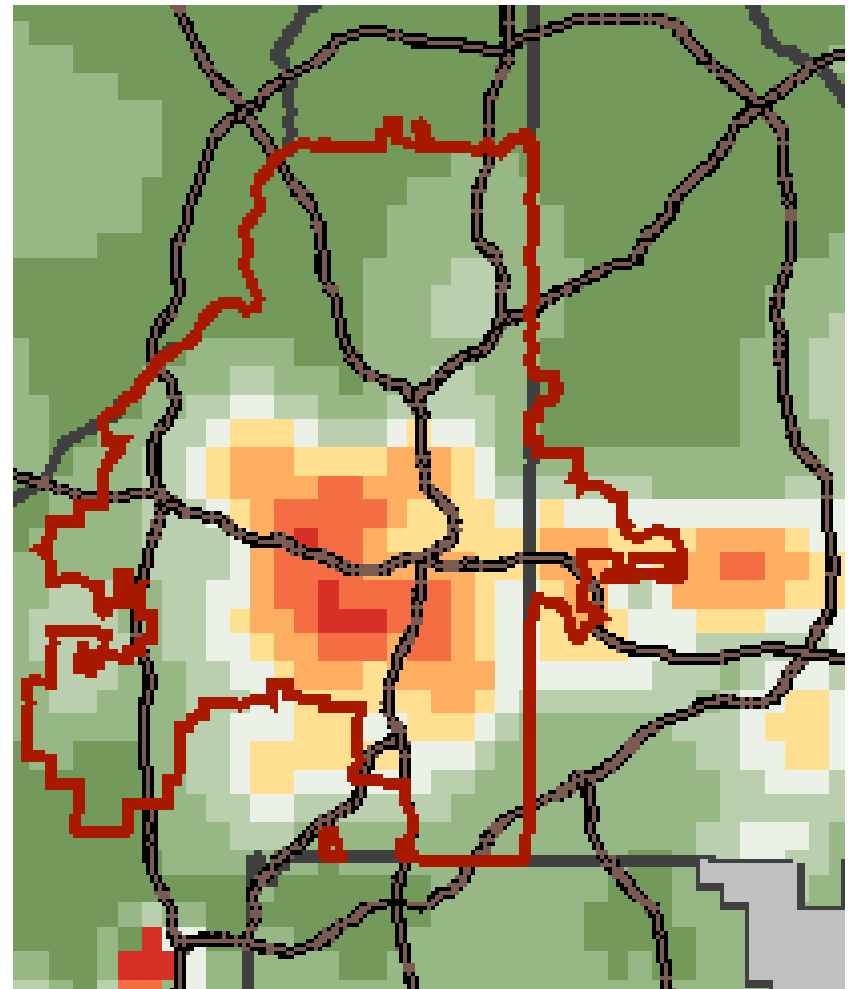
REOs and Foreclosures

REOs per square mile



Source: Fannie Mae, November 2008

Foreclosure Filings per square mile



Source: Equity Depot, May 2008