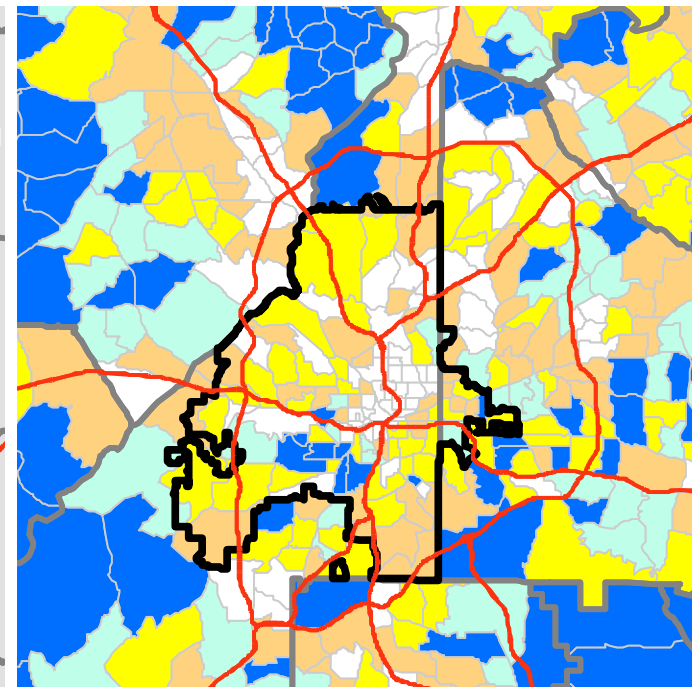
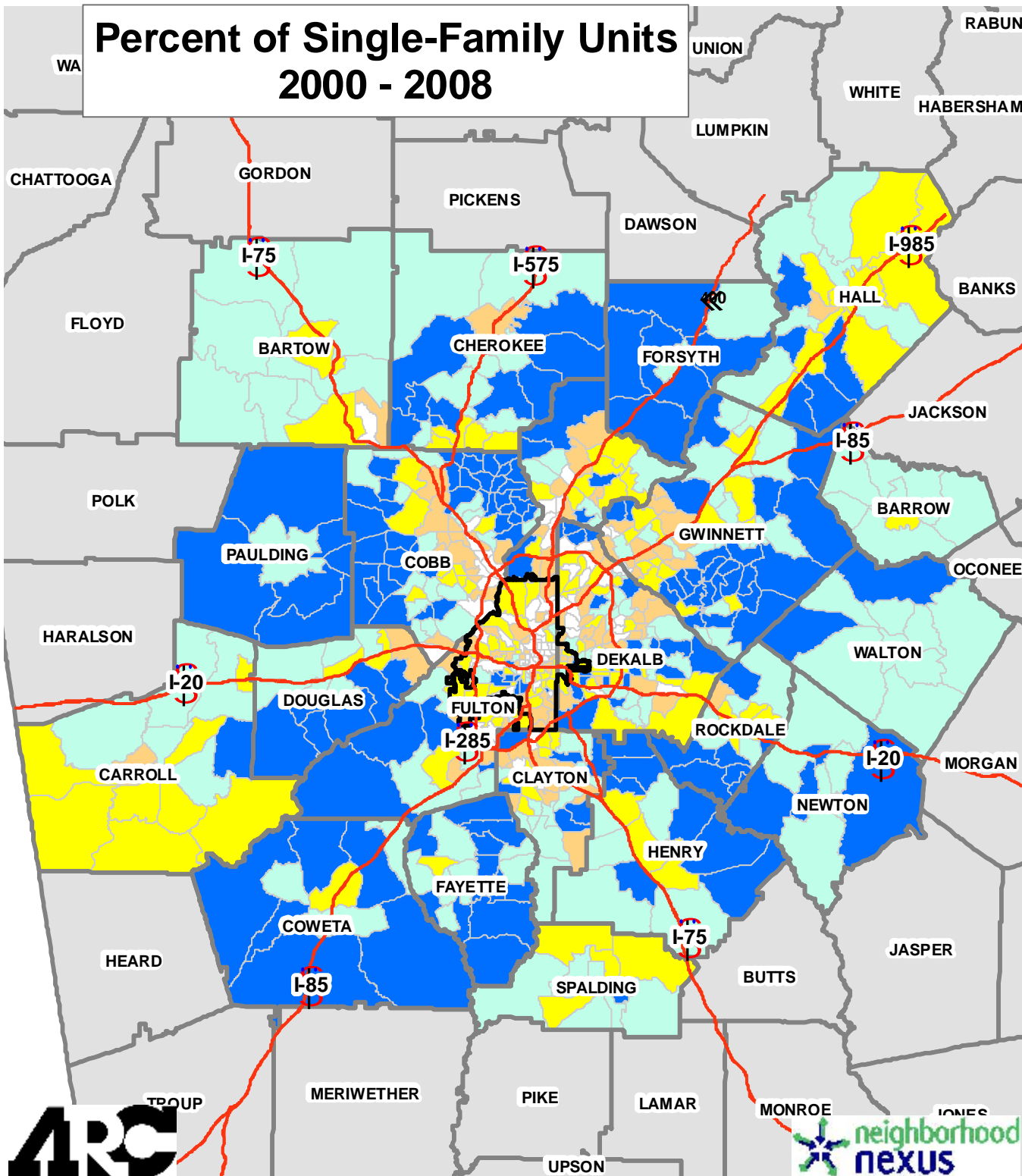


Percent of Single-Family Units 2000 - 2008

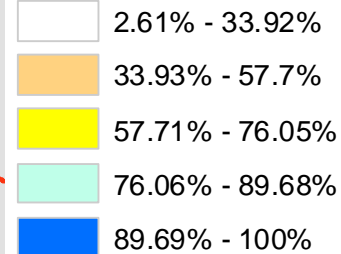


 City of Atlanta

Pop. and Emp. Data

Single-Family

Natural Breaks (Jenks) are Used



Overall, the region's housing stock is dominated by single-family units, with 71% of all units being single-family. This shows where the highest concentrations of single-family housing are located. Typically, the farther away from the urban core, the greater the concentrations of single-family units. But town centers throughout the 20-county region tend to have more multi-family stock.

Source: Atlanta Regional Commission