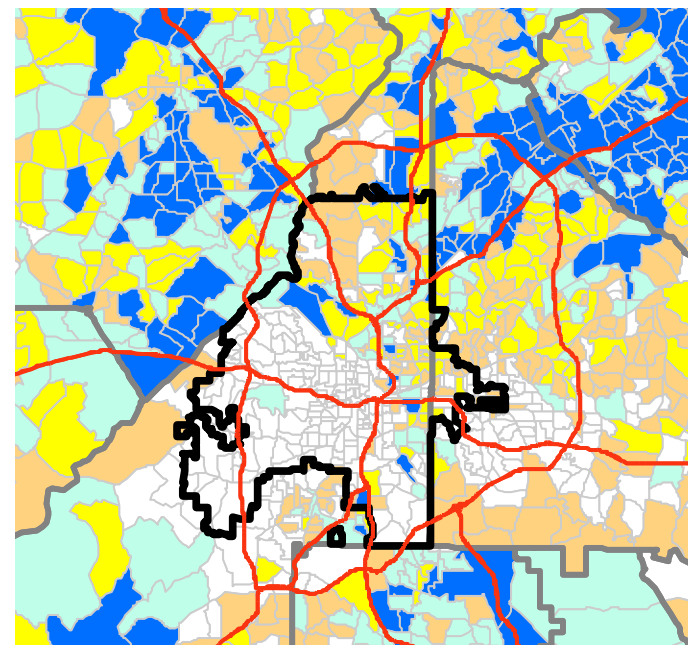
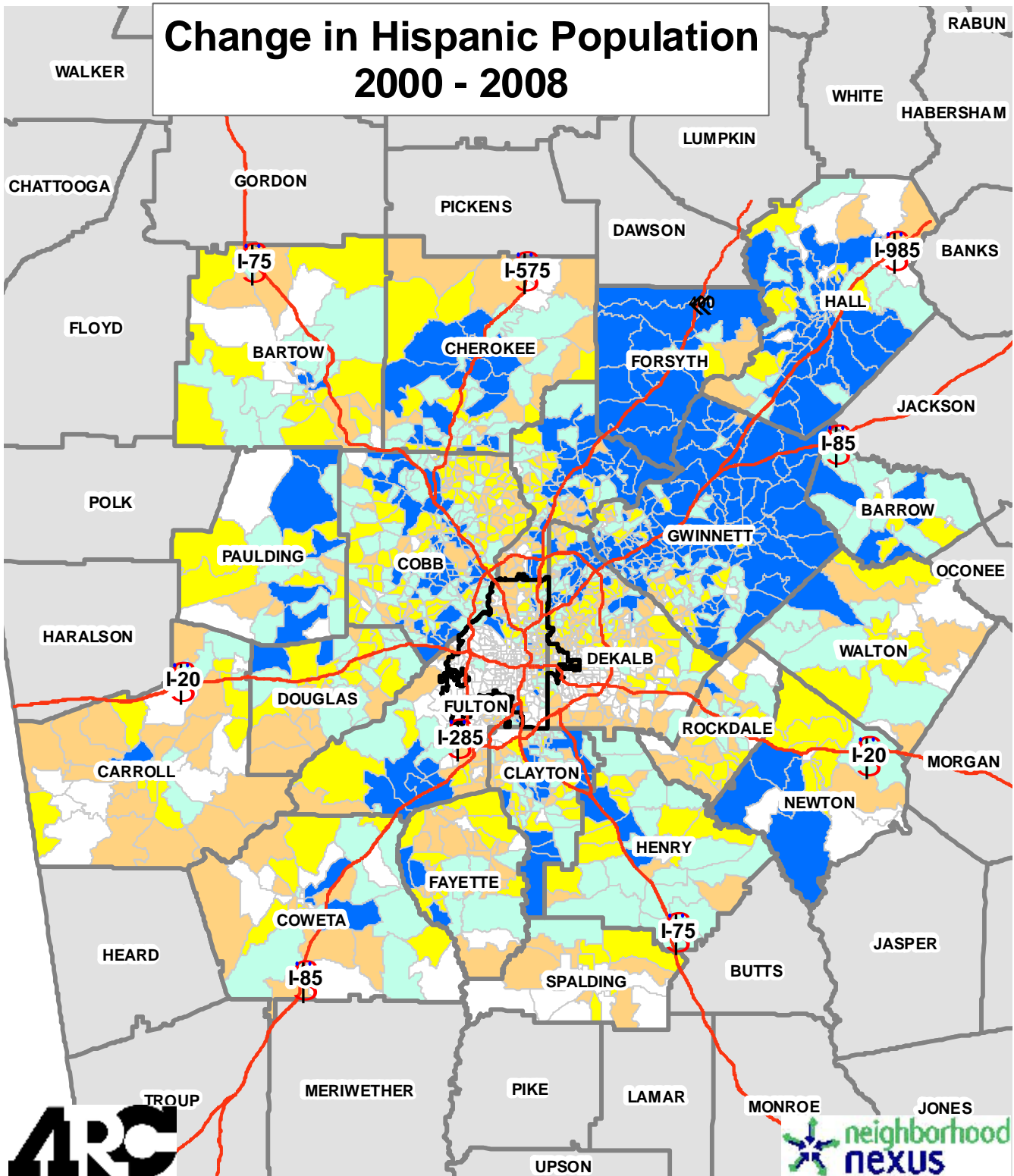


Change in Hispanic Population 2000 - 2008



City of Atlanta

Pop. and Emp. Data

Change in Hispanics 00-08

- 75 - 9
- 10 - 30
- 31 - 62
- 63 - 153
- 154 - 2,482

Quintiles are Used

Using ESRI's model-based estimates, this shows the change in the Hispanic population between 2000 - 2008 at the Census Block Group level. The largest net gains in Hispanic population occurred in Gwinnett, Forsyth and Hall counties. Although, as can be see, there are pockets of Hispanics throughout the region.



Source: ESRI