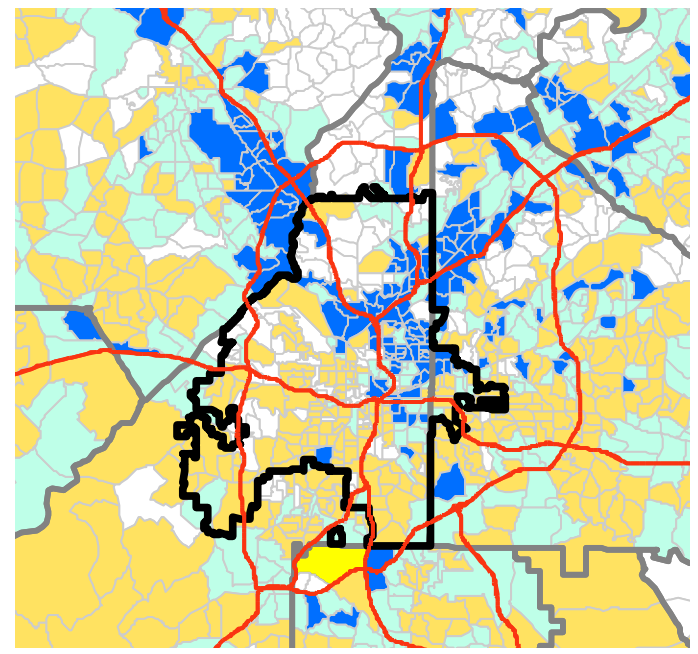
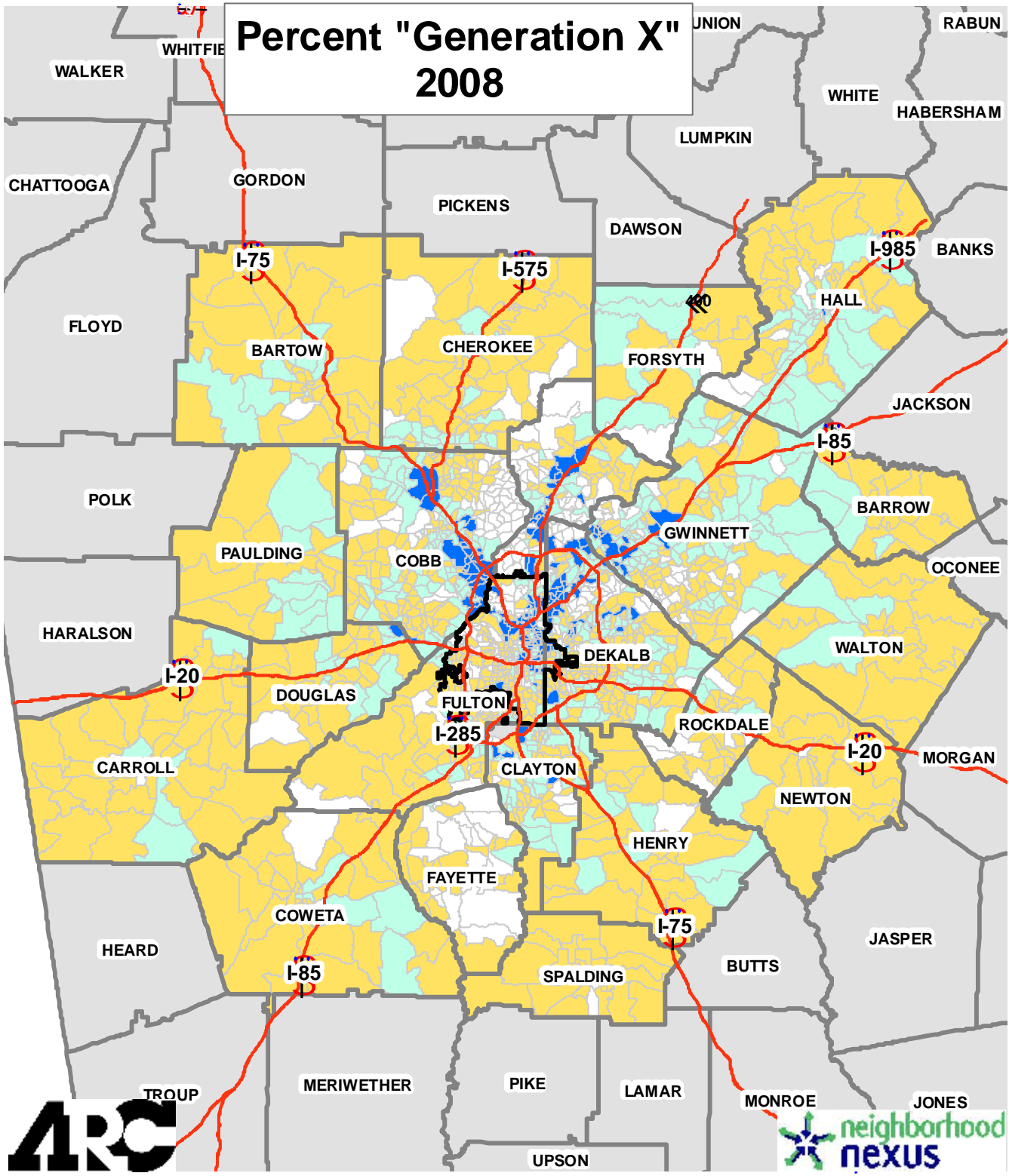


Percent "Generation X" 2008



City of Atlanta
Pop. and Emp. Data
% Gen-X
 0.96% - 16.46% Natural Breaks (Jenks) are Used
 16.47% - 23.44%
 23.45% - 33.76%
 33.77% - 64.71%

Using ESRI's model-based estimates, this shows, as of 2008, where the heaviest concentrations of "Gen-X'ers." As can be seen, unlike the boomers, Generation X (here defined as those age (25 to 39) is heavily concentrated in and around areas within the City of Atlanta, like Midtown, Downtown and east Atlanta, as well as significant pockets near Vinings, Cumberland, Emory, Kennesaw and Alpharetta. Of the 27 largest metro areas, Atlanta ranks second in the percent of those aged 25-39.



Source: ESRI