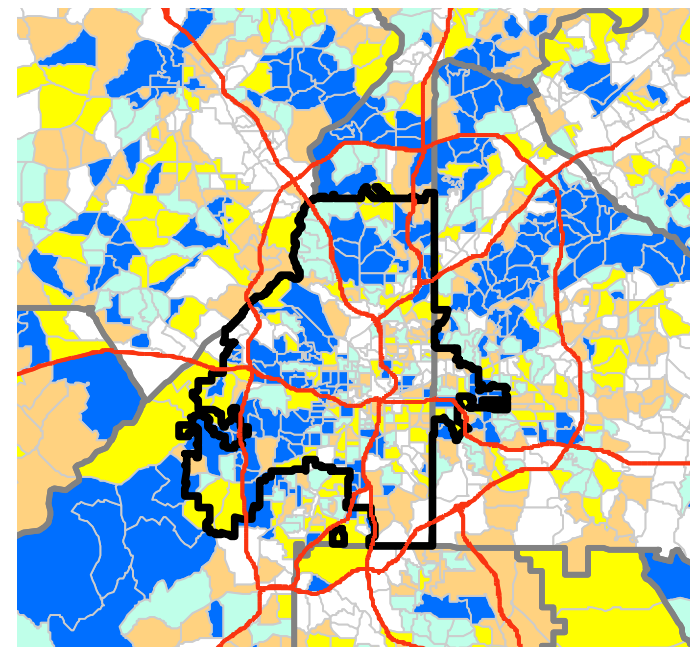
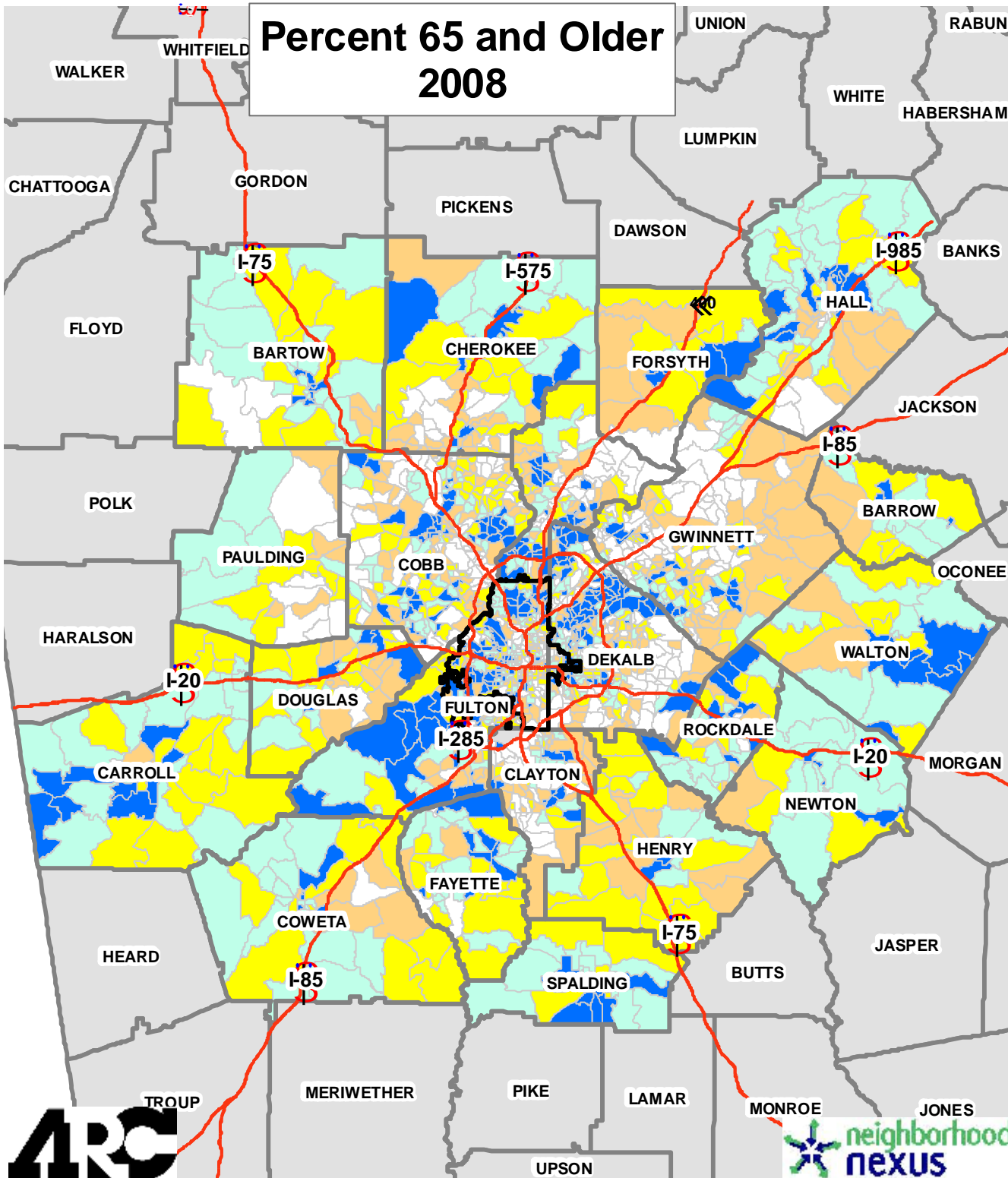


# Percent 65 and Older 2008



City of Atlanta

## Pop. and Emp. Data

### % 65 and Older

0% - 5.17%

5.18% - 7.68%

7.69% - 10.08%

10.09% - 13.61%

13.62% - 60%

Quintiles are Used

Using ESRI's model-based estimates, this shows, as of 2008, where the heaviest concentrations of the 65 and older population. The heaviest concentrations occur in southern Fulton, DeKalb County south of I-85, and various areas in the outer edges of the region.

It should be noted that while the 65 and older age group is the fastest-growing segment of the population, Atlanta is a young place. In comparing Atlanta to other large metros based on percentage of 65 and older population, it ranks near the bottom.



Source: ESRI