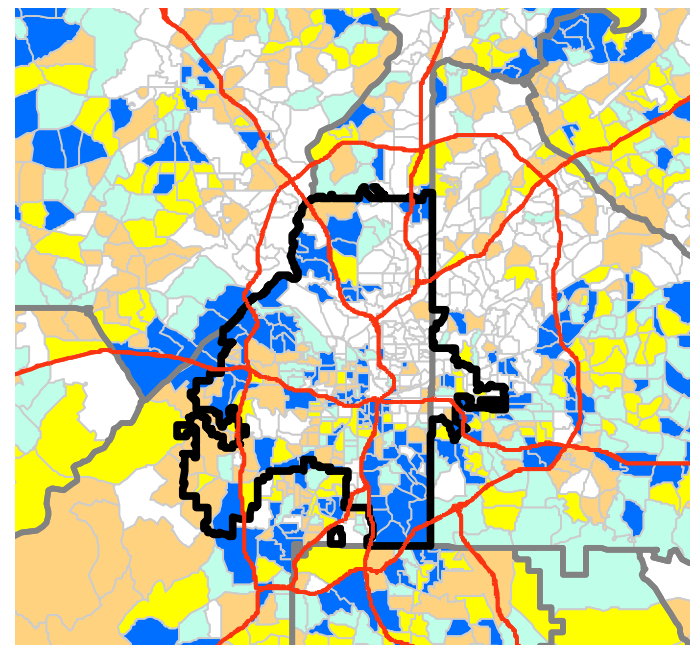
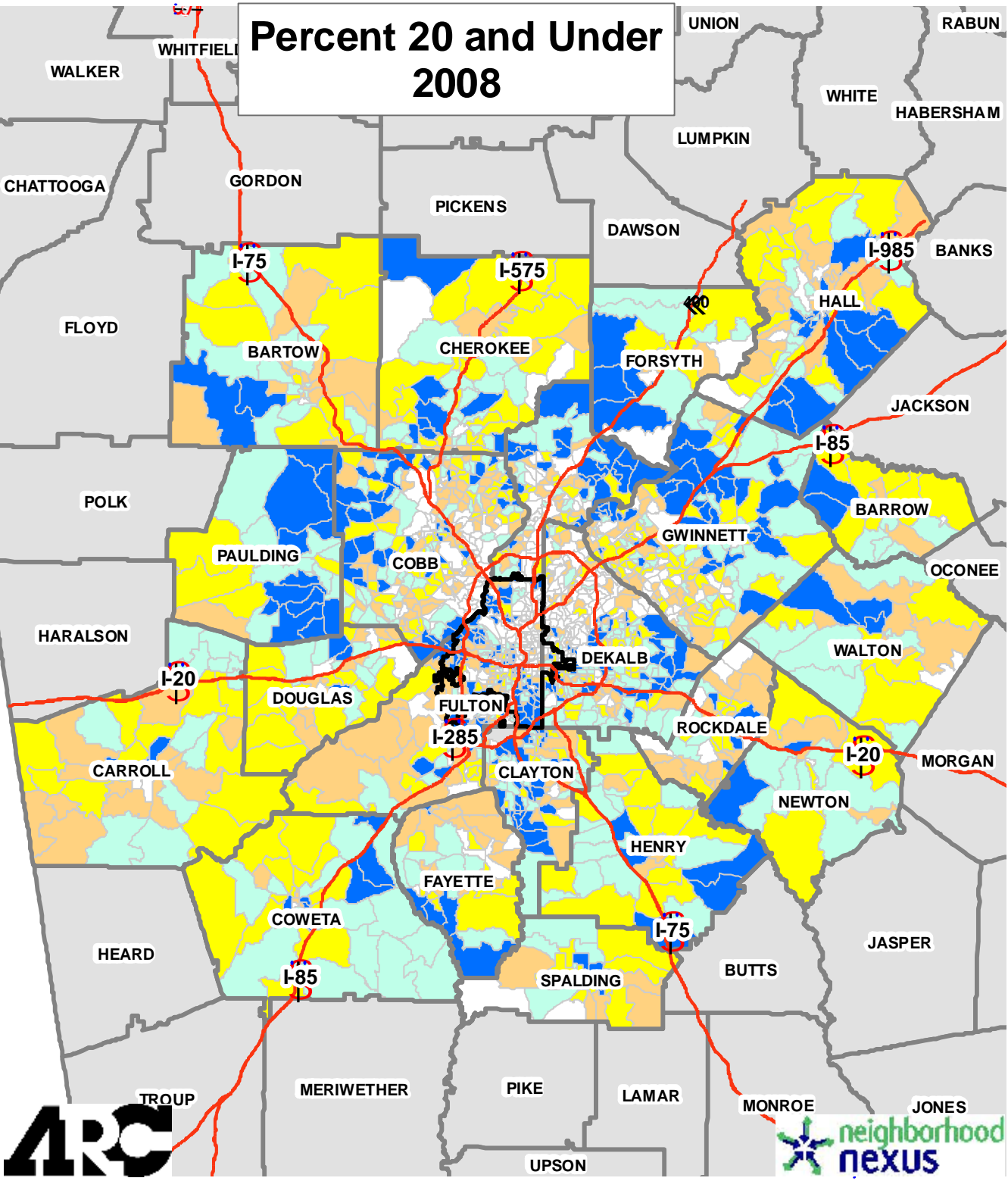


# Percent 20 and Under 2008



City of Atlanta  
**Pop. and Emp. Data**  
**% Under 20**  
 0% - 22.52%  
 22.53% - 26.52%  
 26.53% - 29%  
 29.01% - 31.7%  
 31.71% - 66.18%

Quintiles are Used

Using ESRI's model-based estimates, this shows, as of 2008, where the heaviest concentrations of the 20 and under population. Overall population growth begets more population growth through natural increase (births over deaths). This illustrates that point. Those areas that have been the fastest-growing this decade have, in general, the largest clusters of those 20 and under. Also, Hispanics tend to be younger than the overall population, so those areas with large concentrations of Hispanics will be younger as well.



Source: ESRI